



# CABINET SPECIFICATIONS

Rev. 02/21/18

Note: Beyond the product(s) shown here, the E2I team is able to source additional options to fit the budget, spec, and scope of your project.



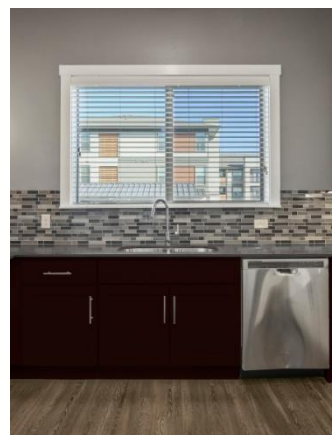
## Cabinet Colors



Light French Grey



Classic French Grey



Espresso



Ginger



Walnut Wainscot



Tricorn Black



Ceiling Bright White



Aesthetic White

Note: Actual color may vary from catalog representation. To confirm your color choices prior to purchase, please view a physical color chip, color card, or painted sample. Besides the standard options shown here, cabinets can be customized with any Sherwin Williams color.

## Door Styles



Shaker 01

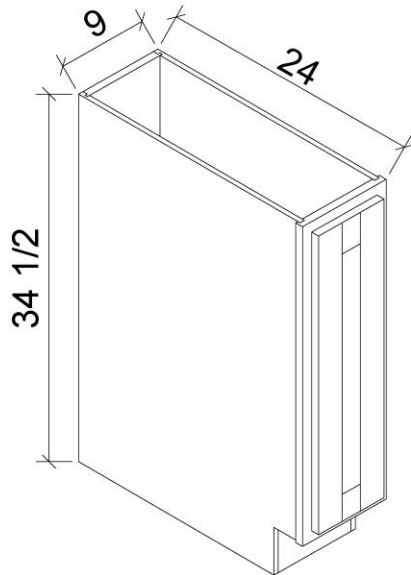
Additional cabinet door styles include: Flush European-style Slab, Ornate Raised-panel, and more.



Note: Beyond the product(s) shown here, the E2I team is able to source additional options to fit the budget, spec, and scope of your project.

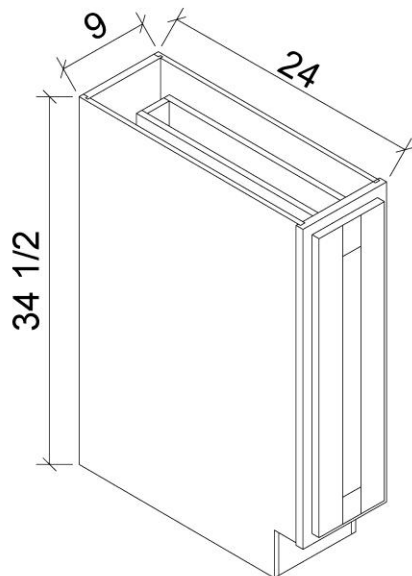
## E2I Product Specifications – Base Cabinet

Tray Base



Model	Description	Width	Height	Depth
B09FHD	Cabinet Dimension	9	34 ½	24
	Door Dimension	8 ⅞	28 ¾	¾

Spice Rack



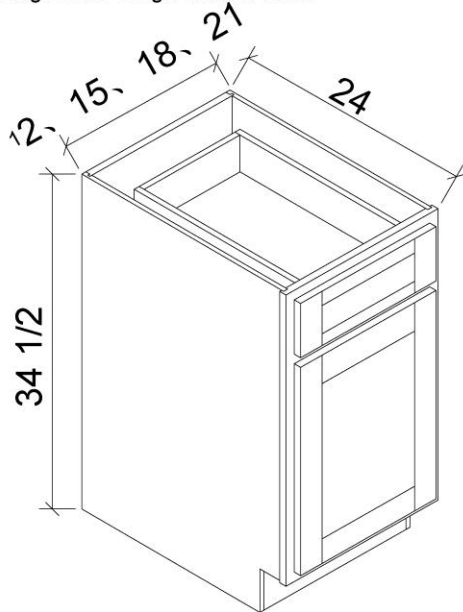
Model	Description	Width	Height	Depth
B06SR	Cabinet Dimension	6	34 ½	24
	Door Dimension	5 ⅞	28 ¾	¾
B09SR	Cabinet Dimension	9	34 ½	24
	Door Dimension	8 ⅞	28 ¾	¾

page 1

Note: Beyond the product(s) shown here, the E2I team is able to source additional options to fit the budget, spec, and scope of your project.

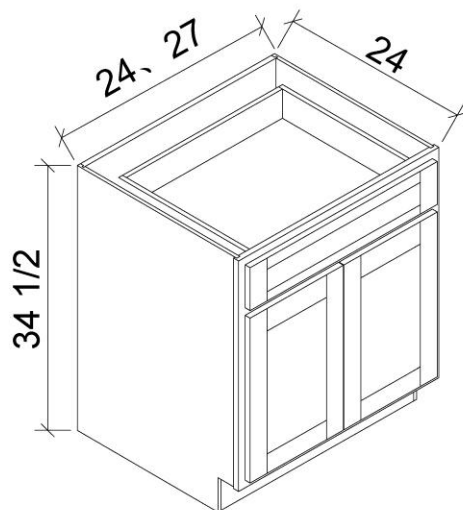
## E2I Product Specifications – Base Cabinet

Single Door Single Drawer Base



Model	Description	Width	Height	Depth
B12	Cabinet Dimension	12	34½	24
	Door Dimension	11 9/16	21 ½	¾
	Drawer Front	11 9/16	6 ¾	¾
B15	Cabinet Dimension	15	34½	24
	Door Dimension	14 9/16	21 ½	¾
	Drawer Front	14 9/16	6 ¾	¾
B18	Cabinet Dimension	18	34 ½	24
	Door Dimension	17 9/16	21 ½	¾
	Drawer Front	17 9/16	6 ¾	¾
B21	Cabinet Dimension	21	34½	24
	Door Dimension	20 9/16	21½	¾
	Drawer Front	20 9/16	6¾	¾

Double Door Single Drawer Base



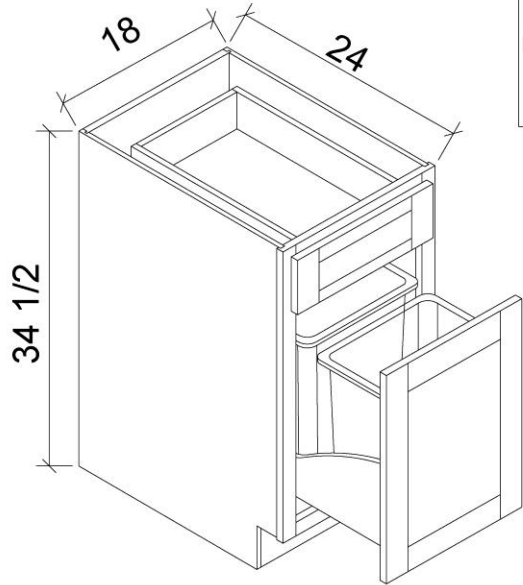
Model	Description	Width	Height	Depth
B24	Cabinet Dimension	24	34½	24
	Door Dimension	11¾	21½	¾
	Drawer Front	23 9/16	6¾	¾
B27	Cabinet Dimension	27	34½	24
	Door Dimension	13¾	21½	¾
	Drawer Front	26 9/16	6¾	¾

page 2

Note: Beyond the product(s) shown here, the E2I team is able to source additional options to fit the budget, spec, and scope of your project.

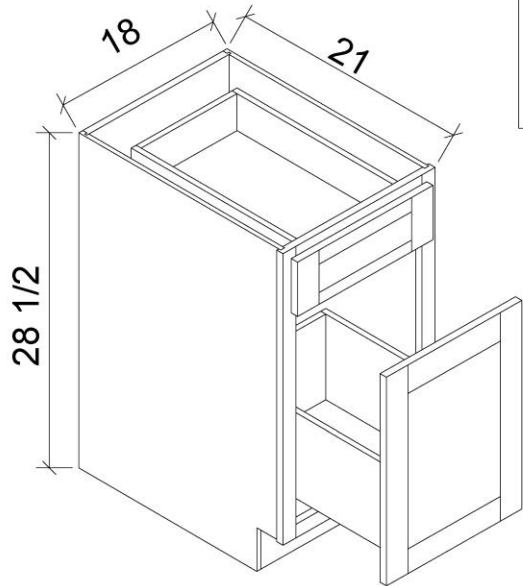
## E2I Product Specifications – Base Cabinet

Drawer Base with Trash Can



Model	Description	Width	Height	Depth
B18-Trash	Cabinet Dimension	18	34½	24
	Drawer Front	17 <sup>9</sup> / <sub>16</sub>	6¾	¾
	Bottom Drawer Front	17 <sup>9</sup> / <sub>16</sub>	21½	¾

Drawer File Cabinet



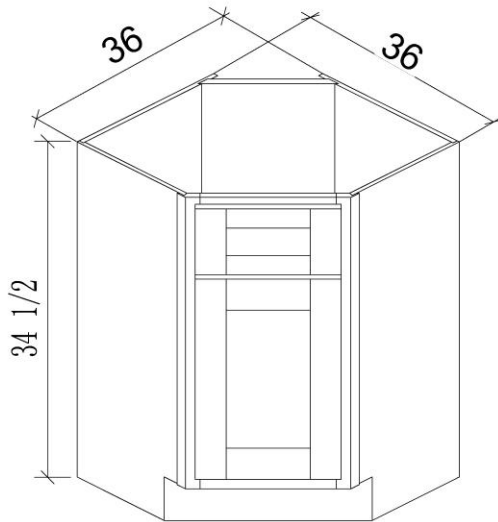
Model	Description	Width	Height	Depth
DF18-21	Cabinet Dimension	18	28½	21
	Drawer Front	17 <sup>9</sup> / <sub>16</sub>	6¾	¾
	Bottom Drawer Front	17 <sup>9</sup> / <sub>16</sub>	15½	¾

page 3

Note: Beyond the product(s) shown here, the E2I team is able to source additional options to fit the budget, spec, and scope of your project.

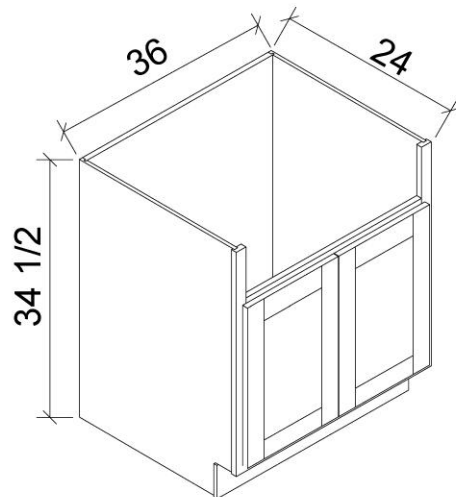
## E2I Product Specifications – Base Cabinet

Corner Sink Base



Model	Description	Width	Height	Depth
DCSB36	Cabinet Dimension	36	34½	36
	Door Dimension	15 <sup>3</sup> / <sub>16</sub>	21½	¾
	Drawer Front	15 <sup>3</sup> / <sub>16</sub>	6¾	¾

Farm Sink Base



Model	Description	Width	Height	Depth
FSB36	Cabinet Dimension	30	34½	24
	Door Dimension	17 <sup>1</sup> / <sub>16</sub>	21½	¾

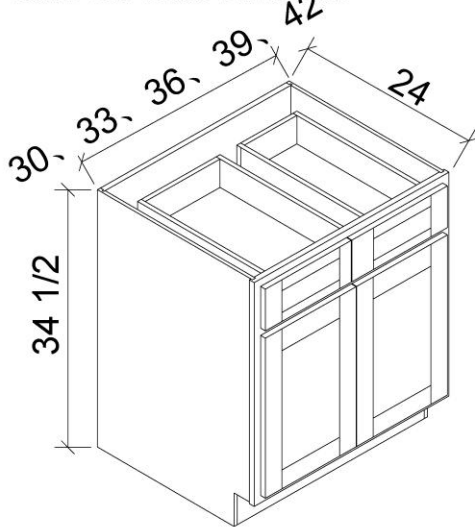
page 4

Note: Beyond the product(s) shown here, the E2I team is able to source additional options to fit the budget, spec, and scope of your project.



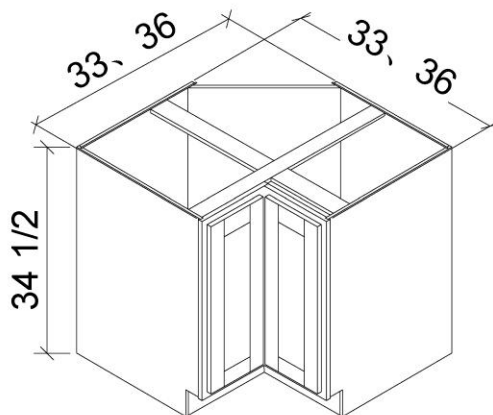
## E2I Product Specifications – Base Cabinet

Double Door Double Drawer Base



Model	Description	Width	Height	Depth
B30	Cabinet Dimension	30	34½	24
	Door Dimension	14¾	21½	¾
	Drawer Front	14¾	6¾	¾
B33	Cabinet Dimension	33	34½	24
	Door Dimension	16¼	21½	¾
	Drawer Front	16¼	6¾	¾
B36	Cabinet Dimension	36	34½	24
	Door Dimension	17 <sup>11</sup> / <sub>16</sub>	21½	¾
	Drawer Front	17 <sup>11</sup> / <sub>16</sub>	6¾	¾
B39	Cabinet Dimension	39	34½	24
	Door Dimension	19¼	21½	¾
	Drawer Front	19¼	6¾	¾
B42	Cabinet Dimension	42	34½	24
	Door Dimension	20¾	21½	¾
	Drawer Front	20¾	6¾	¾

Lazy Susan Cabinet



Model	Description	Width	Height	Depth
BLS33	Cabinet Dimension	33	34½	33
	Door Dimension	7¾	28¾	¾
BLS36	Cabinet Dimension	36	34½	36
	Door Dimension	10¾	28¾	¾

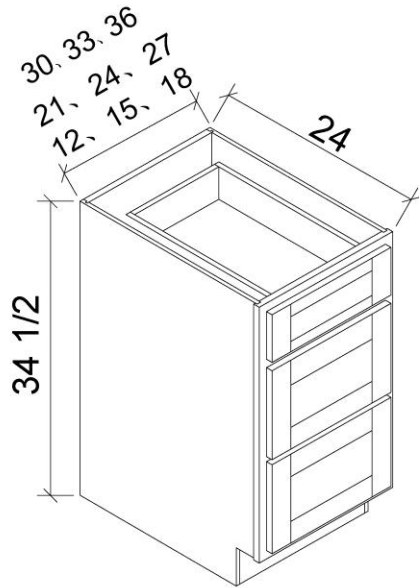
page 5

Note: Beyond the product(s) shown here, the E2I team is able to source additional options to fit the budget, spec, and scope of your project.



## E2I Product Specifications – Base Cabinet

### Drawer Base



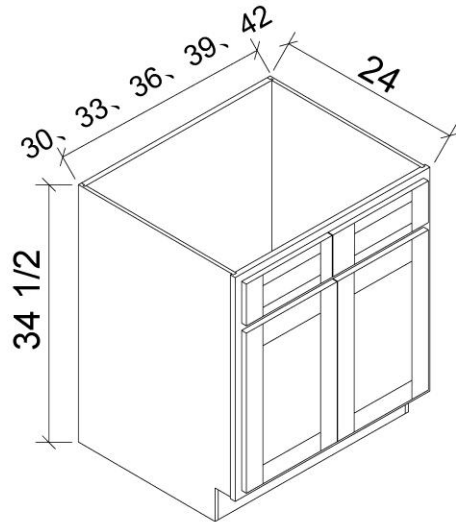
Model	Description	Width	Height	Depth
3DB12	Cabinet Dimension	12	34½	24
	Top Drawer Front	11 <sup>9</sup> / <sub>16</sub>	6¾	¾
	Bottom Drawer Front	11 <sup>9</sup> / <sub>16</sub>	10½	¾
3DB15	Cabinet Dimension	15	34½	24
	Top Drawer Front	14 <sup>9</sup> / <sub>16</sub>	6¾	¾
	Bottom Drawer Front	14 <sup>9</sup> / <sub>16</sub>	10½	¾
3DB18	Cabinet Dimension	18	34½	24
	Top Drawer Front	17 <sup>9</sup> / <sub>16</sub>	6¾	¾
	Bottom Drawer Front	17 <sup>9</sup> / <sub>16</sub>	10½	¾
3DB21	Cabinet Dimension	21	34½	24
	Top Drawer Front	20 <sup>9</sup> / <sub>16</sub>	6¾	¾
	Bottom Drawer Front	20 <sup>9</sup> / <sub>16</sub>	10½	¾
3DB24	Cabinet Dimension	24	34½	24
	Top Drawer Front	23 <sup>9</sup> / <sub>16</sub>	6¾	¾
	Bottom Drawer Front	23 <sup>9</sup> / <sub>16</sub>	10½	¾
3DB27	Cabinet Dimension	27	34½	24
	Top Drawer Front	26 <sup>9</sup> / <sub>16</sub>	6¾	¾
	Bottom Drawer Front	26 <sup>9</sup> / <sub>16</sub>	10½	¾
3DB30	Cabinet Dimension	30	34½	24
	Top Drawer Front	29 <sup>9</sup> / <sub>16</sub>	6¾	¾
	Bottom Drawer Front	29 <sup>9</sup> / <sub>16</sub>	10½	¾
3DB33	Cabinet Dimension	33	34½	24
	Top Drawer Front	32 <sup>9</sup> / <sub>16</sub>	6¾	¾
	Bottom Drawer Front	32 <sup>9</sup> / <sub>16</sub>	10½	¾
3DB36	Cabinet Dimension	36	34½	24
	Top Drawer Front	35 <sup>9</sup> / <sub>16</sub>	6¾	¾
	Bottom Drawer Front	35 <sup>9</sup> / <sub>16</sub>	10½	¾

page 6

Note: Beyond the product(s) shown here, the E2I team is able to source additional options to fit the budget, spec, and scope of your project.

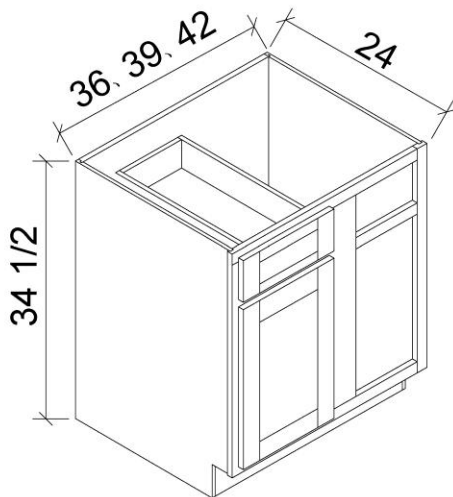
## E2I Product Specifications – Base Cabinet

Sink Base



Model	Description	Width	Height	Depth
SB30	Cabinet Dimension	30	34½	24
	Door Dimension	14¾	21½	¾
	Drawer Front	14¾	6¾	¾
SB33	Cabinet Dimension	33	34½	24
	Door Dimension	16¼	21½	¾
	Drawer Front	16¼	6¾	¾
SB36	Cabinet Dimension	36	34½	24
	Door Dimension	17 <sup>11</sup> / <sub>16</sub>	21½	¾
	Drawer Front	17 <sup>11</sup> / <sub>16</sub>	6¾	¾
SB39	Cabinet Dimension	39	34½	24
	Door Dimension	19¼	21½	¾
	Drawer Front	19¼	6¾	¾
SB42	Cabinet Dimension	42	34½	24
	Door Dimension	20¾	21½	¾
	Drawer Front	20¾	6¾	¾

Blind Base



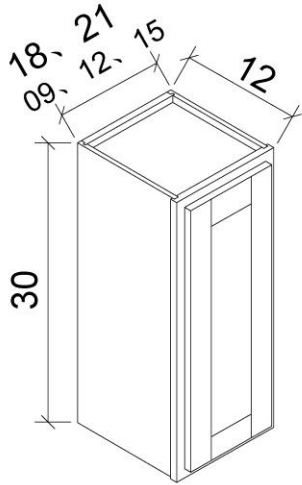
Model	Description	Width	Height	Depth
BLB39/42-36	Cabinet Dimension	36	34½	24
	Door Dimension	11 <sup>9</sup> / <sub>16</sub>	21½	¾
	Drawer Front	11 <sup>9</sup> / <sub>16</sub>	6¾	¾
BLB42/45-39	Cabinet Dimension	39	34½	24
	Door Dimension	14 <sup>9</sup> / <sub>16</sub>	21½	¾
	Drawer Front	14 <sup>9</sup> / <sub>16</sub>	6¾	¾
BLB45/48-42	Cabinet Dimension	42	34½	24
	Door Dimension	17 <sup>9</sup> / <sub>16</sub>	21½	¾
	Drawer Front	17 <sup>9</sup> / <sub>16</sub>	6¾	¾

page 7

Note: Beyond the product(s) shown here, the E2I team is able to source additional options to fit the budget, spec, and scope of your project.

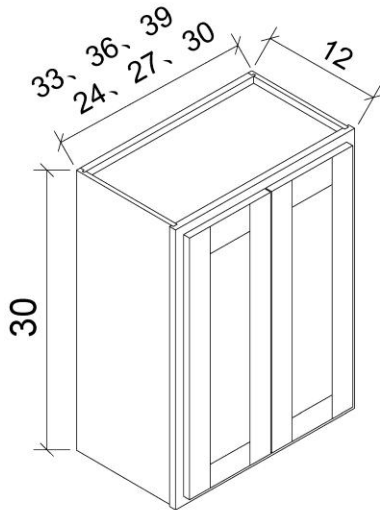
## E2I Product Specifications – Wall Cabinet

30 High Wall Cabinet-Single Door



Model	Description	Width	Height	Depth
W0930	Cabinet Dimension	9	30	12
	Door Dimension	$8\frac{9}{16}$	$29\frac{1}{16}$	$\frac{3}{4}$
W1230	Cabinet Dimension	12	30	12
	Door Dimension	$11\frac{9}{16}$	$29\frac{1}{16}$	$\frac{3}{4}$
W1530	Cabinet Dimension	15	30	12
	Door Dimension	$14\frac{9}{16}$	$29\frac{1}{16}$	$\frac{3}{4}$
W1830	Cabinet Dimension	18	30	12
	Door Dimension	$17\frac{9}{16}$	$29\frac{1}{16}$	$\frac{3}{4}$
W2130	Cabinet Dimension	21	30	12
	Door Dimension	$20\frac{9}{16}$	$29\frac{1}{16}$	$\frac{3}{4}$

30 High Wall Cabinet-Double Door



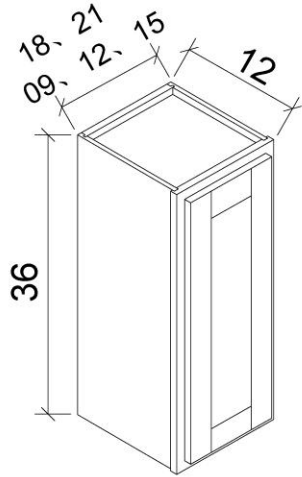
Model	Description	Width	Height	Depth
W2430	Cabinet Dimension	24	30	12
	Door Dimension	$11\frac{3}{4}$	$29\frac{1}{16}$	$\frac{3}{4}$
W2730	Cabinet Dimension	27	30	12
	Door Dimension	$12\frac{1}{4}$	$29\frac{1}{16}$	$\frac{3}{4}$
W3030	Cabinet Dimension	30	30	12
	Door Dimension	$14\frac{3}{4}$	$29\frac{1}{16}$	$\frac{3}{4}$
W3330	Cabinet Dimension	33	30	12
	Door Dimension	$16\frac{1}{4}$	$29\frac{1}{16}$	$\frac{3}{4}$
W3630	Cabinet Dimension	36	30	12
	Door Dimension	$17\frac{1}{16}$	$29\frac{1}{16}$	$\frac{3}{4}$
W3930	Cabinet Dimension	39	30	12
	Door Dimension	$19\frac{1}{4}$	$29\frac{1}{16}$	$\frac{3}{4}$

page 8

Note: Beyond the product(s) shown here, the E2I team is able to source additional options to fit the budget, spec, and scope of your project.

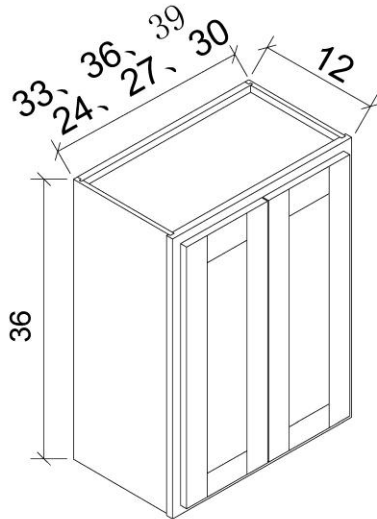
## E2I Product Specifications – Wall Cabinet

36 High Wall Cabinet-Single Door



Model	Description	Width	Height	Depth
W0936	Cabinet Dimension	9	36	12
	Door Dimension	$8\frac{9}{16}$	$35\frac{1}{16}$	$\frac{3}{4}$
W1236	Cabinet Dimension	12	36	12
	Door Dimension	$11\frac{9}{16}$	$35\frac{1}{16}$	$\frac{3}{4}$
W1536	Cabinet Dimension	15	36	12
	Door Dimension	$14\frac{9}{16}$	$35\frac{1}{16}$	$\frac{3}{4}$
W1836	Cabinet Dimension	18	36	12
	Door Dimension	$17\frac{9}{16}$	$36\frac{1}{16}$	$\frac{3}{4}$
W2136	Cabinet Dimension	21	36	12
	Door Dimension	$20\frac{9}{16}$	$35\frac{1}{16}$	$\frac{3}{4}$

36 High Wall Cabinet-Double Door



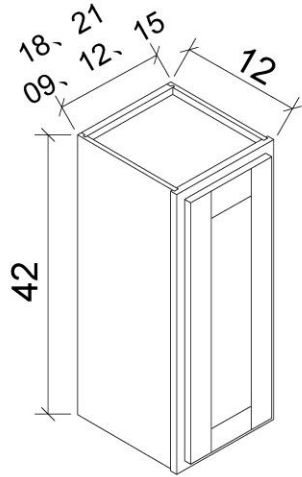
Model	Description	Width	Height	Depth
W2436	Cabinet Dimension	24	36	12
	Door Dimension	$11\frac{3}{4}$	$35\frac{1}{16}$	$\frac{3}{4}$
W2736	Cabinet Dimension	27	36	12
	Door Dimension	$13\frac{3}{4}$	$35\frac{1}{16}$	$\frac{3}{4}$
W3036	Cabinet Dimension	30	36	12
	Door Dimension	$14\frac{3}{4}$	$35\frac{1}{16}$	$\frac{3}{4}$
W3336	Cabinet Dimension	33	36	12
	Door Dimension	$16\frac{1}{4}$	$35\frac{1}{16}$	$\frac{3}{4}$
W3636	Cabinet Dimension	36	36	12
	Door Dimension	$17\frac{11}{16}$	$35\frac{1}{16}$	$\frac{3}{4}$
W3936	Cabinet Dimension	39	36	12
	Door Dimension	$19\frac{1}{4}$	$35\frac{1}{16}$	$\frac{3}{4}$

page 9

Note: Beyond the product(s) shown here, the E2I team is able to source additional options to fit the budget, spec, and scope of your project.

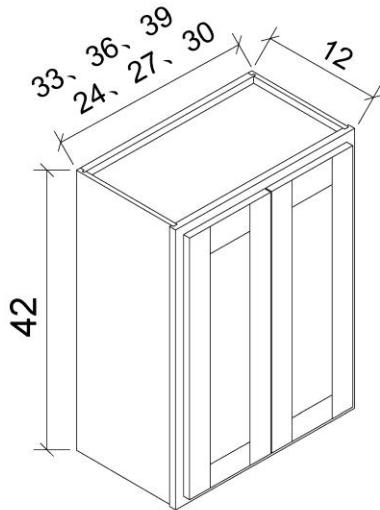
## E2I Product Specifications – Wall Cabinet

42 High Wall Cabinet-Single Door



Model	Description	Width	Height	Depth
W0942	Cabinet Dimension	9	42	12
	Door Dimension	8 <sup>9</sup> / <sub>16</sub>	41 <sup>1</sup> / <sub>16</sub>	<sup>3</sup> / <sub>4</sub>
W1242	Cabinet Dimension	12	42	12
	Door Dimension	11 <sup>9</sup> / <sub>16</sub>	41 <sup>1</sup> / <sub>16</sub>	<sup>3</sup> / <sub>4</sub>
W1542	Cabinet Dimension	15	42	12
	Door Dimension	14 <sup>9</sup> / <sub>16</sub>	41 <sup>1</sup> / <sub>16</sub>	<sup>3</sup> / <sub>4</sub>
W1842	Cabinet Dimension	18	42	12
	Door Dimension	17 <sup>9</sup> / <sub>16</sub>	41 <sup>1</sup> / <sub>16</sub>	<sup>3</sup> / <sub>4</sub>
W2142	Cabinet Dimension	21	42	12
	Door Dimension	20 <sup>9</sup> / <sub>16</sub>	41 <sup>1</sup> / <sub>16</sub>	<sup>3</sup> / <sub>4</sub>

42 High Wall Cabinet-Double Door



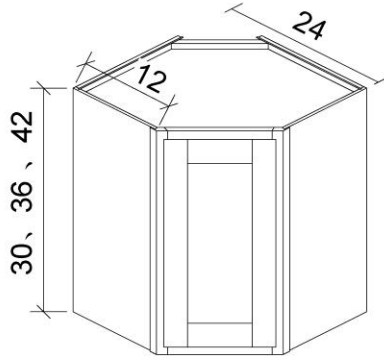
Model	Description	Width	Height	Depth
W2442	Cabinet Dimension	24	42	12
	Door Dimension	11 <sup>3</sup> / <sub>4</sub>	41 <sup>1</sup> / <sub>16</sub>	<sup>3</sup> / <sub>4</sub>
W2742	Cabinet Dimension	27	42	12
	Door Dimension	13 <sup>3</sup> / <sub>4</sub>	41 <sup>1</sup> / <sub>16</sub>	<sup>3</sup> / <sub>4</sub>
W3042	Cabinet Dimension	30	42	12
	Door Dimension	14 <sup>3</sup> / <sub>4</sub>	41 <sup>1</sup> / <sub>16</sub>	<sup>3</sup> / <sub>4</sub>
W3342	Cabinet Dimension	33	42	12
	Door Dimension	16 <sup>1</sup> / <sub>4</sub>	41 <sup>1</sup> / <sub>16</sub>	<sup>3</sup> / <sub>4</sub>
W3642	Cabinet Dimension	36	42	12
	Door Dimension	17 <sup>1</sup> / <sub>16</sub>	41 <sup>1</sup> / <sub>16</sub>	<sup>3</sup> / <sub>4</sub>
W3942	Cabinet Dimension	39	42	12
	Door Dimension	19 <sup>1</sup> / <sub>4</sub>	41 <sup>1</sup> / <sub>16</sub>	<sup>3</sup> / <sub>4</sub>

page 10

Note: Beyond the product(s) shown here, the E2I team is able to source additional options to fit the budget, spec, and scope of your project.

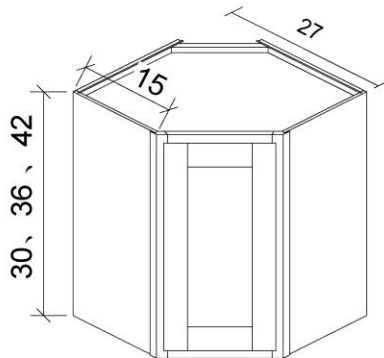
## E2I Product Specifications – Wall Cabinet

Wall Diagonal Corner Cabinet



Model	Description	Width	Height	Depth
WDC2430	Cabinet Dimension	24	30	12
	Door Dimension	15 $\frac{1}{4}$	29 $\frac{1}{16}$	$\frac{3}{4}$
WDC2436	Cabinet Dimension	24	36	12
	Door Dimension	15 $\frac{1}{4}$	35 $\frac{1}{16}$	$\frac{3}{4}$
WDC2442	Cabinet Dimension	24	42	12
	Door Dimension	15 $\frac{1}{4}$	41 $\frac{1}{16}$	$\frac{3}{4}$

Wall Diagonal Corner Cabinet



Model	Description	Width	Height	Depth
WDC2730	Cabinet Dimension	27	30	12
	Door Dimension	15 $\frac{1}{4}$	29 $\frac{1}{16}$	$\frac{3}{4}$
WDC2736	Cabinet Dimension	27	36	12
	Door Dimension	15 $\frac{1}{4}$	35 $\frac{1}{16}$	$\frac{3}{4}$
WDC2742	Cabinet Dimension	27	42	12
	Door Dimension	15 $\frac{1}{4}$	41 $\frac{1}{16}$	$\frac{3}{4}$

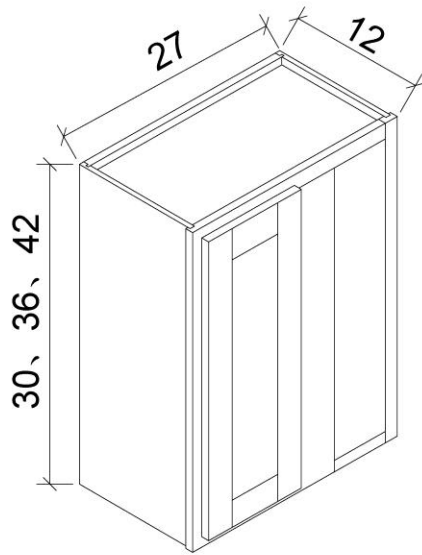
page 11

Note: Beyond the product(s) shown here, the E2I team is able to source additional options to fit the budget, spec, and scope of your project.



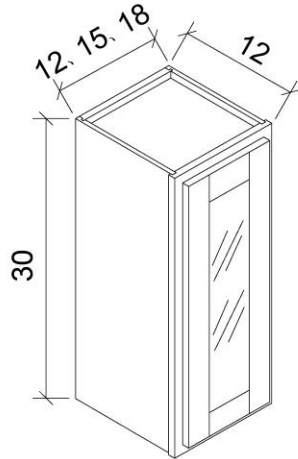
## E2I Product Specifications – Wall Cabinet

Wall Blind Cabinet



Model	Description	Width	Height	Depth
WBC2730	Cabinet Dimension	27	30	12
	Door Dimension	14½	29⅛	¾
WBC2736	Cabinet Dimension	27	36	12
	Door Dimension	14½	35⅛	¾
WBC2742	Cabinet Dimension	27	42	12
	Door Dimension	14½	41⅛	¾

30 High Wall Cabinet-Single Glass Door



Model	Description	Width	Height	Depth
W1230GD-Cab	Cabinet Dimension	12	30	12
	Door Dimension	11⅞	29⅛	¾
W1530GD-Cab	Cabinet Dimension	15	30	12
	Door Dimension	14⅞	29⅛	¾
W1830GD-Cab	Cabinet Dimension	18	30	12
	Door Dimension	17⅞	29⅛	¾

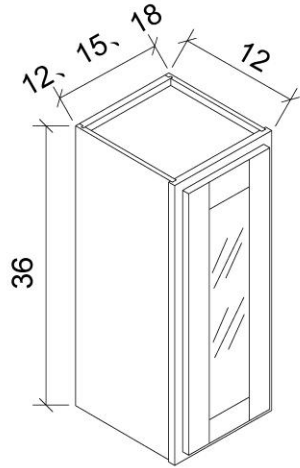
page 12

Note: Beyond the product(s) shown here, the E2I team is able to source additional options to fit the budget, spec, and scope of your project.



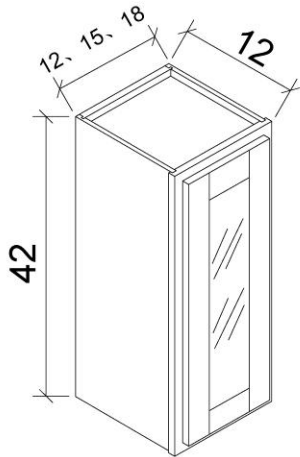
## E2I Product Specifications – Wall Cabinet

36 High Wall Cabinet-Single Glass Door



Model	Description	Width	Height	Depth
W1236GD-Cab	Cabinet Dimension	12	36	12
	Door Dimension	11 <sup>9</sup> / <sub>16</sub>	35 <sup>5</sup> / <sub>16</sub>	<sup>3</sup> / <sub>4</sub>
W1536GD-Cab	Cabinet Dimension	15	36	12
	Door Dimension	14 <sup>9</sup> / <sub>16</sub>	35 <sup>5</sup> / <sub>16</sub>	<sup>3</sup> / <sub>4</sub>
W1836GD-Cab	Cabinet Dimension	18	36	12
	Door Dimension	17 <sup>9</sup> / <sub>16</sub>	35 <sup>5</sup> / <sub>16</sub>	<sup>3</sup> / <sub>4</sub>

42 High Wall Cabinet-Single Glass Door



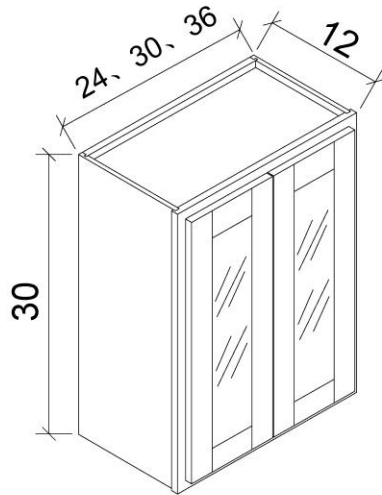
Model	Description	Width	Height	Depth
W1242GD-Cab	Cabinet Dimension	12	42	12
	Door Dimension	11 <sup>9</sup> / <sub>16</sub>	41 <sup>1</sup> / <sub>16</sub>	<sup>3</sup> / <sub>4</sub>
W1542GD-Cab	Cabinet Dimension	15	42	12
	Door Dimension	14 <sup>9</sup> / <sub>16</sub>	41 <sup>1</sup> / <sub>16</sub>	<sup>3</sup> / <sub>4</sub>
W1842GD-Cab	Cabinet Dimension	18	42	12
	Door Dimension	17 <sup>1</sup> / <sub>16</sub>	41 <sup>1</sup> / <sub>16</sub>	<sup>3</sup> / <sub>4</sub>

page 13

Note: Beyond the product(s) shown here, the E2I team is able to source additional options to fit the budget, spec, and scope of your project.

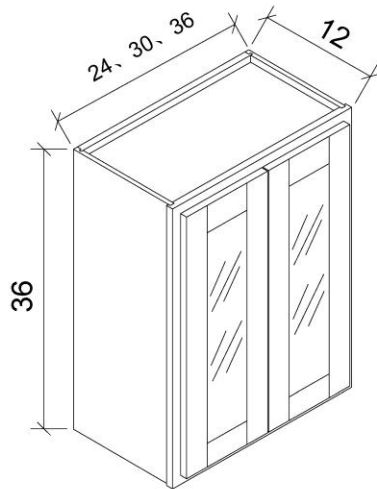
## E2I Product Specifications – Wall Cabinet

30 High Wall Cabinet-Double Glass Door



Model	Description	Width	Height	Depth
W2430GD-Cab	Cabinet Dimension	24	30	12
	Door Dimension	11 $\frac{3}{4}$	29 $\frac{1}{16}$	$\frac{3}{4}$
W3030GD-Cab	Cabinet Dimension	30	30	12
	Door Dimension	14 $\frac{3}{4}$	29 $\frac{1}{16}$	$\frac{3}{4}$
W3630GD-Cab	Cabinet Dimension	36	30	12
	Door Dimension	17 $\frac{1}{16}$	29 $\frac{1}{16}$	$\frac{3}{4}$

36 High Wall Cabinet-Double Glass Door

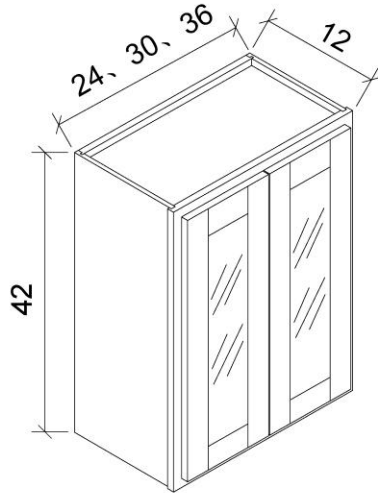


Model	Description	Width	Height	Depth
W2436GD-Cab	Cabinet Dimension	24	36	12
	Door Dimension	11 $\frac{3}{4}$	35 $\frac{1}{16}$	$\frac{3}{4}$
W3036GD-Cab	Cabinet Dimension	30	36	12
	Door Dimension	14 $\frac{3}{4}$	35 $\frac{1}{16}$	$\frac{3}{4}$
W3636GD-Cab	Cabinet Dimension	36	36	12
	Door Dimension	17 $\frac{1}{16}$	35 $\frac{1}{16}$	$\frac{3}{4}$

Note: Beyond the product(s) shown here, the E2I team is able to source additional options to fit the budget, spec, and scope of your project.

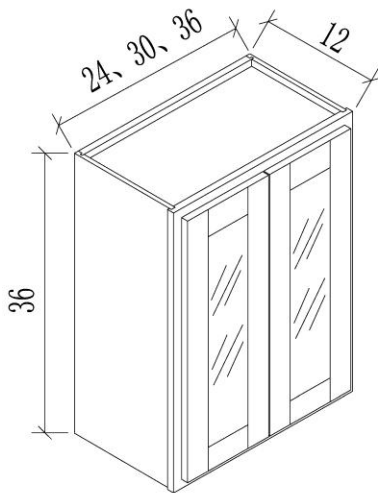
## E2I Product Specifications – Wall Cabinet

42 High Wall Cabinet-Double Glass Door



Model	Description	Width	Height	Depth
W2442GD-Cab	Cabinet Dimension	24	42	12
	Door Dimension	11 $\frac{3}{4}$	41 $\frac{1}{16}$	$\frac{3}{4}$
W3042GD-Cab	Cabinet Dimension	30	42	12
	Door Dimension	14 $\frac{3}{4}$	41 $\frac{1}{16}$	$\frac{3}{4}$
W3642GD-Cab	Cabinet Dimension	36	42	12
	Door Dimension	17 $\frac{1}{16}$	41 $\frac{1}{16}$	$\frac{3}{4}$

36 High Wall Cabinet-Double Glass Door



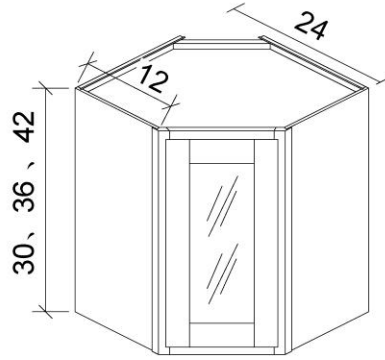
Model	Description	Width	Height	Depth
W2436GD-Cab	Cabinet Dimension	24	36	12
	Door Dimension	11 $\frac{3}{4}$	35 $\frac{1}{16}$	$\frac{3}{4}$
W3036GD-Cab	Cabinet Dimension	30	36	12
	Door Dimension	14 $\frac{3}{4}$	35 $\frac{1}{16}$	$\frac{3}{4}$
W3636GD-Cab	Cabinet Dimension	36	36	12
	Door Dimension	17 $\frac{1}{16}$	35 $\frac{1}{16}$	$\frac{3}{4}$

page 15

Note: Beyond the product(s) shown here, the E2I team is able to source additional options to fit the budget, spec, and scope of your project.

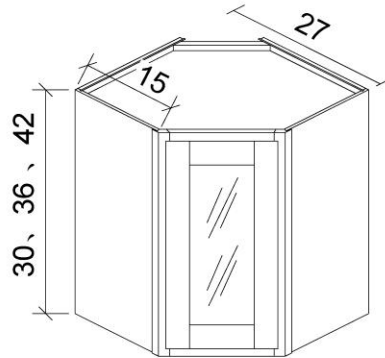
## E2I Product Specifications – Wall Cabinet

Wall Diagonal Corner Cabinet-Glass Door



Model	Description	Width	Height	Depth
WDC2430GD-Cab	Cabinet Dimension	24	30	12
	Door Dimension	15 $\frac{1}{4}$	29 $\frac{1}{16}$	$\frac{3}{4}$
WDC2436GD-Cab	Cabinet Dimension	24	36	12
	Door Dimension	15 $\frac{1}{4}$	35 $\frac{1}{16}$	$\frac{3}{4}$
WDC2442GD-Cab	Cabinet Dimension	24	42	12
	Door Dimension	15 $\frac{1}{4}$	41 $\frac{1}{16}$	$\frac{3}{4}$

Wall Diagonal Corner Cabinet-Glass Door

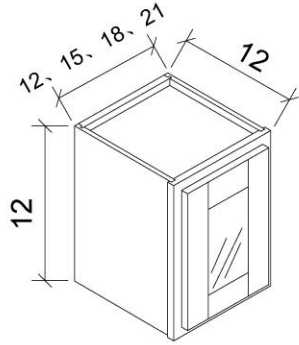


Model	Description	Width	Height	Depth
WDC2730GD-Cab	Cabinet Dimension	27	30	12
	Door Dimension	15 $\frac{1}{4}$	29 $\frac{1}{16}$	$\frac{3}{4}$
WDC2736GD-Cab	Cabinet Dimension	27	36	12
	Door Dimension	15 $\frac{1}{4}$	35 $\frac{1}{16}$	$\frac{3}{4}$
WDC2742GD-Cab	Cabinet Dimension	27	42	12
	Door Dimension	15 $\frac{1}{4}$	41 $\frac{1}{16}$	$\frac{3}{4}$

Note: Beyond the product(s) shown here, the E2I team is able to source additional options to fit the budget, spec, and scope of your project.

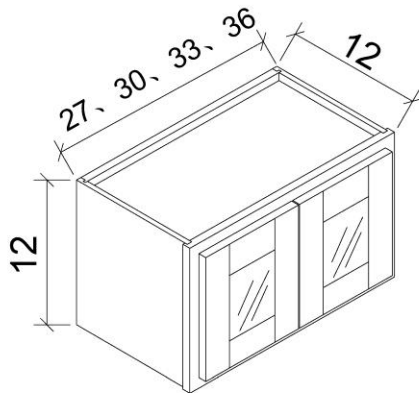
## E2I Product Specifications – Wall Cabinet

12 High Wall Cabinet-Single Glass Door



Model	Description	Width	Height	Depth
W1212GD-Cab	Cabinet Dimension	12	12	12
	Door Dimension	11 <sup>9</sup> / <sub>16</sub>	11 <sup>1</sup> / <sub>16</sub>	<sup>3</sup> / <sub>4</sub>
W1512GD-Cab	Cabinet Dimension	15	12	12
	Door Dimension	14 <sup>9</sup> / <sub>16</sub>	11 <sup>1</sup> / <sub>16</sub>	<sup>3</sup> / <sub>4</sub>
W1812GD-Cab	Cabinet Dimension	18	12	12
	Door Dimension	17 <sup>9</sup> / <sub>16</sub>	11 <sup>1</sup> / <sub>16</sub>	<sup>3</sup> / <sub>4</sub>
W2112GD-Cab	Cabinet Dimension	21	12	12
	Door Dimension	20 <sup>9</sup> / <sub>16</sub>	11 <sup>1</sup> / <sub>16</sub>	<sup>3</sup> / <sub>4</sub>

12 High Wall Cabinet-Single Glass Door



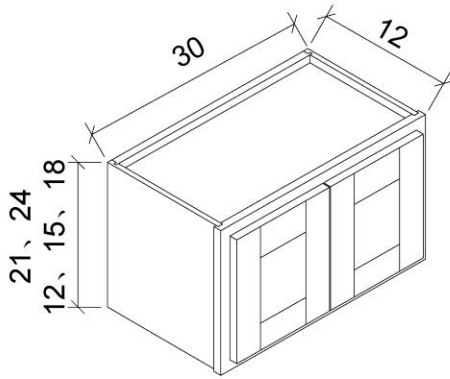
Model	Description	Width	Height	Depth
W2712GD-Cab	Cabinet Dimension	27	12	12
	Door Dimension	13 <sup>3</sup> / <sub>4</sub>	11 <sup>1</sup> / <sub>16</sub>	<sup>3</sup> / <sub>4</sub>
W3012GD-Cab	Cabinet Dimension	30	12	12
	Door Dimension	14 <sup>3</sup> / <sub>14</sub>	11 <sup>1</sup> / <sub>16</sub>	<sup>3</sup> / <sub>4</sub>
W3312GD-Cab	Cabinet Dimension	33	12	12
	Door Dimension	16 <sup>1</sup> / <sub>4</sub>	11 <sup>1</sup> / <sub>16</sub>	<sup>3</sup> / <sub>4</sub>
W3612GD-Cab	Cabinet Dimension	36	12	12
	Door Dimension	17 <sup>11</sup> / <sub>16</sub>	11 <sup>1</sup> / <sub>16</sub>	<sup>3</sup> / <sub>4</sub>

page 17

Note: Beyond the product(s) shown here, the E2I team is able to source additional options to fit the budget, spec, and scope of your project.

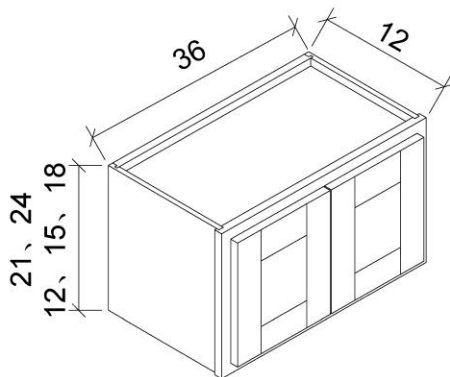
## E2I Product Specifications – Wall Cabinet

30 Bridge Cabinet



Model	Description	Width	Height	Depth
W3012	Cabinet Dimension	30	12	12
	Door Dimension	14 <sup>3</sup> / <sub>4</sub>	11 <sup>1</sup> / <sub>16</sub>	<sup>3</sup> / <sub>4</sub>
W3015	Cabinet Dimension	30	15	12
	Door Dimension	14 <sup>3</sup> / <sub>4</sub>	14 <sup>1</sup> / <sub>16</sub>	<sup>3</sup> / <sub>4</sub>
W3018	Cabinet Dimension	30	18	12
	Door Dimension	14 <sup>3</sup> / <sub>4</sub>	17 <sup>1</sup> / <sub>16</sub>	<sup>3</sup> / <sub>4</sub>
W3021	Cabinet Dimension	30	21	12
	Door Dimension	14 <sup>3</sup> / <sub>4</sub>	20 <sup>1</sup> / <sub>16</sub>	<sup>3</sup> / <sub>4</sub>
W3024	Cabinet Dimension	30	24	12
	Door Dimension	14 <sup>3</sup> / <sub>4</sub>	23 <sup>1</sup> / <sub>16</sub>	<sup>3</sup> / <sub>4</sub>

36 Bridge Cabinet



Model	Description	Width	Height	Depth
W3612	Cabinet Dimension	36	12	12
	Door Dimension	17 <sup>1</sup> / <sub>16</sub>	11 <sup>1</sup> / <sub>16</sub>	<sup>3</sup> / <sub>4</sub>
W3615	Cabinet Dimension	36	15	12
	Door Dimension	17 <sup>1</sup> / <sub>16</sub>	14 <sup>1</sup> / <sub>16</sub>	<sup>3</sup> / <sub>4</sub>
W3618	Cabinet Dimension	36	18	12
	Door Dimension	17 <sup>1</sup> / <sub>16</sub>	17 <sup>1</sup> / <sub>16</sub>	<sup>3</sup> / <sub>4</sub>
W3621	Cabinet Dimension	36	21	12
	Door Dimension	17 <sup>1</sup> / <sub>16</sub>	20 <sup>1</sup> / <sub>16</sub>	<sup>3</sup> / <sub>4</sub>
W3624	Cabinet Dimension	36	24	12
	Door Dimension	17 <sup>1</sup> / <sub>16</sub>	23 <sup>1</sup> / <sub>16</sub>	<sup>3</sup> / <sub>4</sub>

Note: Beyond the product(s) shown here, the E2I team is able to source additional options to fit the budget, spec, and scope of your project.

# E2I Product Specifications – Wall Cabinet

Refrigerator Wall Cabinet

An isometric line drawing of a square refrigerator wall cabinet. Dimension lines indicate a width of 36, a depth of 24, and a height that can be 12, 15, 18, or 24 units. The front of the cabinet features a double-door design with vertical paneling.

Model	Description	Width	Height	Depth
W361224	Cabinet Dimension	36	12	24
	Door Dimension	17 <sup>1</sup> / <sub>16</sub>	11 <sup>1</sup> / <sub>16</sub>	<sup>3</sup> / <sub>4</sub>
W361524	Cabinet Dimension	36	15	24
	Door Dimension	17 <sup>1</sup> / <sub>16</sub>	14 <sup>1</sup> / <sub>16</sub>	<sup>3</sup> / <sub>4</sub>
W361824	Cabinet Dimension	36	18	24
	Door Dimension	17 <sup>1</sup> / <sub>16</sub>	17 <sup>1</sup> / <sub>16</sub>	<sup>3</sup> / <sub>4</sub>
W362424	Cabinet Dimension	36	24	24
	Door Dimension	17 <sup>1</sup> / <sub>16</sub>	23 <sup>1</sup> / <sub>16</sub>	<sup>3</sup> / <sub>4</sub>

Wine Rack

An isometric line drawing of a wine rack. It has a width of 30, a depth of 12, and a height of 18. The interior is fitted with a grid of diagonal slats designed to hold wine bottles at an angle.

Model	Description	Width	Height	Depth
WR3018	Cabinet Dimension	30	18	12

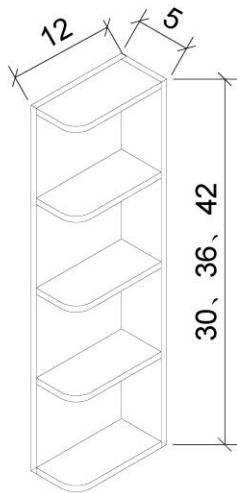
page 19

Note: Beyond the product(s) shown here, the E2I team is able to source additional options to fit the budget, spec, and scope of your project.



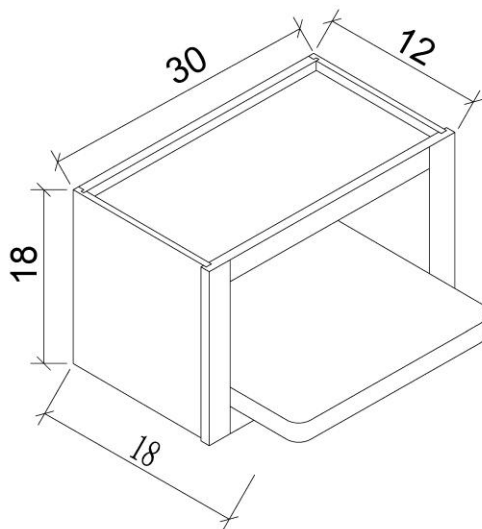
# E2I Product Specifications – Wall Cabinet

## Open End Shelves



Model	Description	Width	Height	Depth
WN530	Cabinet Dimension	5	30	12
WN536	Cabinet Dimension	5	36	12
WN542	Cabinet Dimension	5	42	12

## Microwave Wall Cabinet



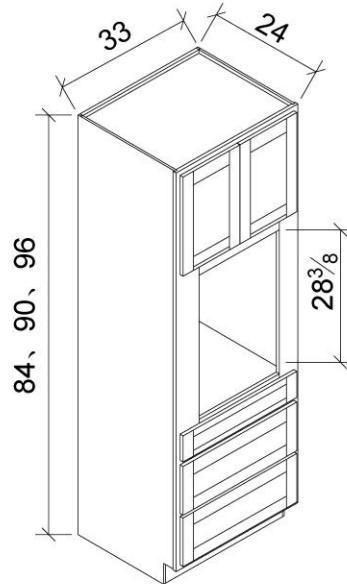
Model	Description	Width	Height	Depth
MWO3018	Cabinet Dimension	30	18	18

page 20

Note: Beyond the product(s) shown here, the E2I team is able to source additional options to fit the budget, spec, and scope of your project.

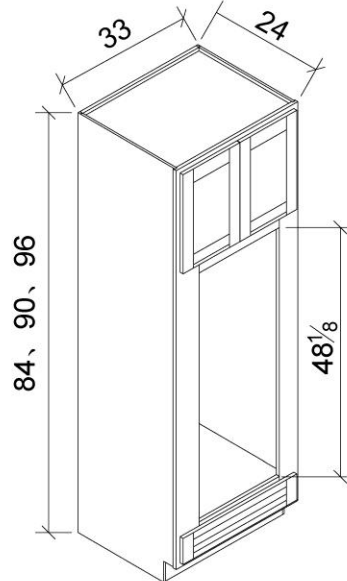
## E2I Product Specifications – Tall Cabinet

Oven Cabinet



Model	Description	Width	Height	Depth
OC3384-3D	Cabinet Dimension	33	84	24
	Door Dimension	16 $\frac{1}{4}$	16	$\frac{3}{4}$
	Top Drawer Front	32 $\frac{9}{16}$	6 $\frac{3}{4}$	$\frac{3}{4}$
	Bottom Drawer Front	32 $\frac{9}{16}$	10 $\frac{1}{2}$	$\frac{3}{4}$
OC3390-3D	Cabinet Dimension	33	90	24
	Door Dimension	16 $\frac{1}{4}$	21 $\frac{15}{16}$	$\frac{3}{4}$
	Top Drawer Front	32 $\frac{9}{16}$	6 $\frac{3}{4}$	$\frac{3}{4}$
	Bottom Drawer Front	32 $\frac{9}{16}$	10 $\frac{1}{2}$	$\frac{3}{4}$
OC3396-3D	Cabinet Dimension	33	96	24
	Door Dimension	16 $\frac{1}{4}$	27 $\frac{15}{16}$	$\frac{3}{4}$
	Top Drawer Front	32 $\frac{9}{16}$	6 $\frac{3}{4}$	$\frac{3}{4}$
	Bottom Drawer Front	32 $\frac{9}{16}$	10 $\frac{1}{2}$	$\frac{3}{4}$

Oven Cabinet



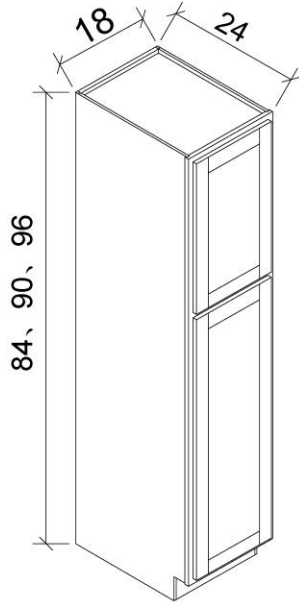
Model	Description	Width	Height	Depth
OC3384-1D	Cabinet Dimension	33	84	24
	Door Dimension	16 $\frac{1}{4}$	16	$\frac{3}{4}$
	Drawer Front	32 $\frac{9}{16}$	6 $\frac{3}{4}$	$\frac{3}{4}$
OC3390-1D	Cabinet Dimension	33	90	24
	Door Dimension	16 $\frac{1}{4}$	21 $\frac{15}{16}$	$\frac{3}{4}$
	Drawer Front	32 $\frac{9}{16}$	6 $\frac{3}{4}$	$\frac{3}{4}$
OC3396-1D	Cabinet Dimension	33	96	24
	Door Dimension	16 $\frac{1}{4}$	27 $\frac{15}{16}$	$\frac{3}{4}$
	Drawer Front	32 $\frac{9}{16}$	6 $\frac{3}{4}$	$\frac{3}{4}$

page 21

Note: Beyond the product(s) shown here, the E2I team is able to source additional options to fit the budget, spec, and scope of your project.

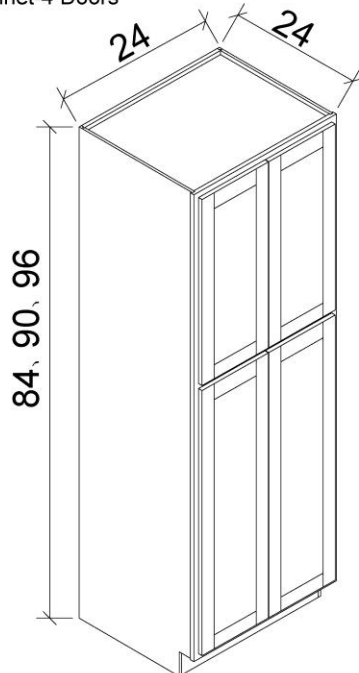
## E2I Product Specifications – Tall Cabinet

Utility Cabinet-2 Doors



Model	Description	Width	Height	Depth
WP1884	Cabinet Dimension	18	90	24
	Top Door Dimension	17½	29⅙	¾
	Bottom Door Dimension	17½	49⅙	¾
WP1890	Cabinet Dimension	18	90	24
	Top Door Dimension	17½	35⅙	¾
	Bottom Door Dimension	17½	49⅙	¾
WP1896	Cabinet Dimension	18	96	24
	Top Door Dimension	17½	41	¾
	Bottom Door Dimension	17½	49⅙	¾

Utility Cabinet-4 Doors



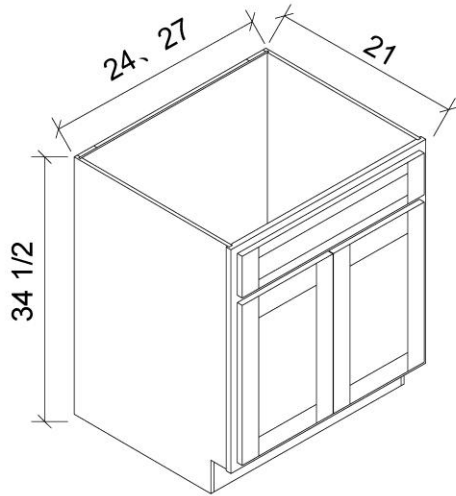
Model	Description	Width	Height	Depth
WP2484	Cabinet Dimension	24	90	24
	Top Door Dimension	11¾	29⅙	¾
	Bottom Door Dimension	11¾	49⅙	¾
WP2490	Cabinet Dimension	24	90	24
	Top Door Dimension	11¾	35⅙	¾
	Bottom Door Dimension	11¾	48⅙	¾
WP2496	Cabinet Dimension	24	96	24
	Top Door Dimension	11¾	41	¾
	Bottom Door Dimension	11¾	49⅙	¾

page 22

Note: Beyond the product(s) shown here, the E2I team is able to source additional options to fit the budget, spec, and scope of your project.

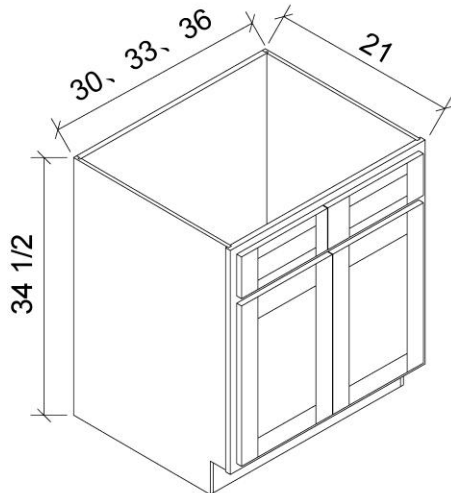
## E2I Product Specifications – Vanity Cabinet

Vanity Sink Base-Double Door Single Drawer Front



Model	Description	Width	Height	Depth
VSB24	Cabinet Dimension	24	34 1/2	21
	Door Dimension	11 3/4	21 1/2	3/4
	Drawer Front	23 9/16	6 3/4	3/4
VSB27	Cabinet Dimension	27	34 1/2	21
	Door Dimension	13 1/4	21 1/2	3/4
	Drawer Front	26 9/16	6 3/4	3/4

Vanity Sink Base-Double Door Double Drawer Front



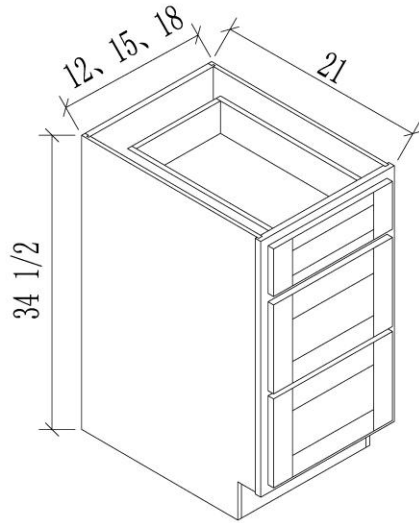
Model	Description	Width	Height	Depth
VSB30	Cabinet Dimension	30	34 1/2	21
	Door Dimension	14 3/4	21 1/2	3/4
	Drawer Front	14 3/4	6 3/4	3/4
VSB33	Cabinet Dimension	33	34 1/2	21
	Door Dimension	16 1/4	21 1/2	3/4
	Drawer Front	16 1/4	6 3/4	3/4
VSB36	Cabinet Dimension	36	34 1/2	21
	Door Dimension	17 1/16	21 1/2	3/4
	Drawer Front	17 1/16	6 3/4	3/4

page 23

Note: Beyond the product(s) shown here, the E2I team is able to source additional options to fit the budget, spec, and scope of your project.

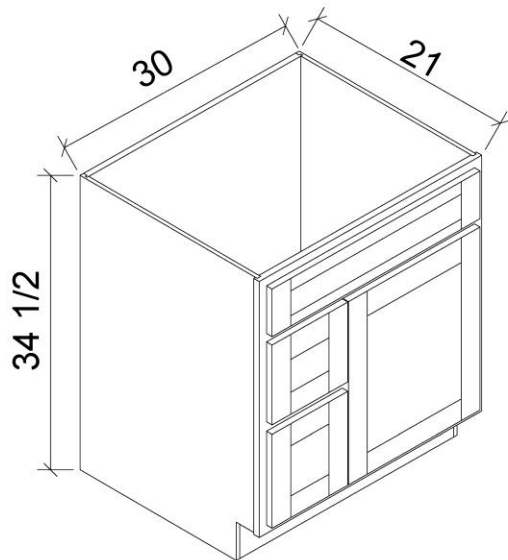
## E2I Product Specifications – Vanity Cabinet

Vanity Drawer Base



Model	Description	Width	Height	Depth
VDB12	Cabinet Dimension	12	34½	24
	Top Drawer Front	11 <sup>9</sup> / <sub>16</sub>	6¾	¾
	Bottom Drawer Front	11 <sup>9</sup> / <sub>16</sub>	10½	¾
VDB15	Cabinet Dimension	15	34½	24
	Top Drawer Front	14 <sup>9</sup> / <sub>16</sub>	6¾	¾
	Bottom Drawer Front	14 <sup>9</sup> / <sub>16</sub>	10½	¾
VDB18	Cabinet Dimension	18	34½	24
	Top Drawer Front	17 <sup>9</sup> / <sub>16</sub>	6¾	¾
	Bottom Drawer Front	17 <sup>9</sup> / <sub>16</sub>	10½	¾

Vanity Combo Base-Drawers Left



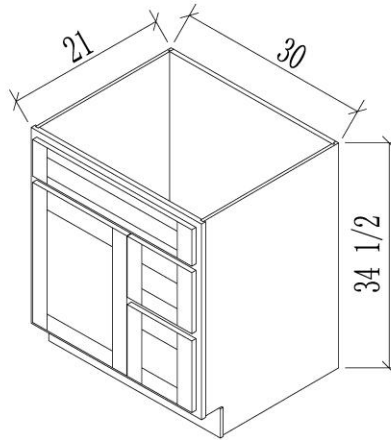
Model	Description	Width	Height	Depth
VSD30L	Cabinet Dimension	30	34½	21
	Door Dimension	20½	21½	¾
	Top Drawer Front	29½	6¾	¾
	Bottom Drawer Front	8 <sup>9</sup> / <sub>16</sub>	10½	¾

page 24

Note: Beyond the product(s) shown here, the E2I team is able to source additional options to fit the budget, spec, and scope of your project.

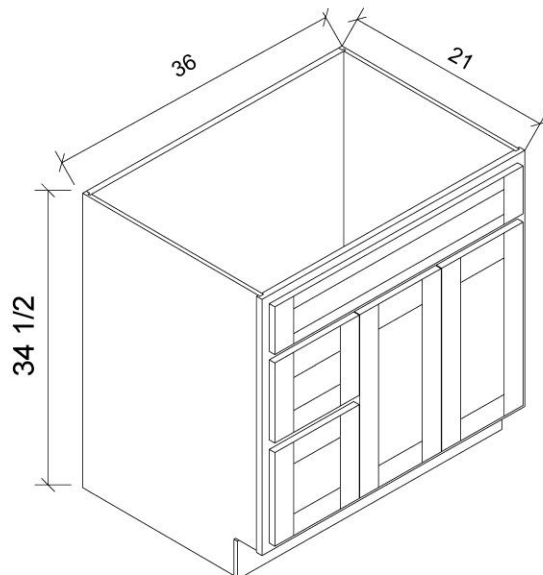
## E2I Product Specifications – Vanity Cabinet

Vanity Combo Base-Drawers Right



Model	Description	Width	Height	Depth
VSD30R	Cabinet Dimension	30	34½	21
	Door Dimension	20½	21½	¾
	Top Drawer Front	29½	6¾	¾
	Bottom Drawer Front	8⅞	10½	¾

Vanity Combo Base-Drawers Left



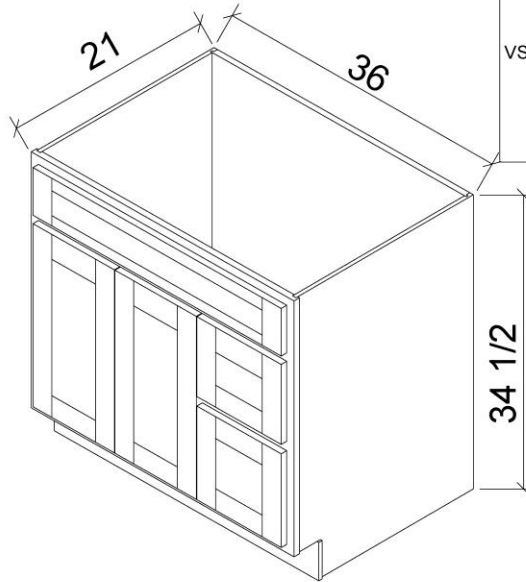
Model	Description	Width	Height	Depth
VSD36L	Cabinet Dimension	36	34½	21
	Door Dimension	20½	11¾	¾
	Top Drawer Front	35½	6¾	¾
	Bottom Drawer Front	11⅞	10½	¾

page 25

Note: Beyond the product(s) shown here, the E2I team is able to source additional options to fit the budget, spec, and scope of your project.

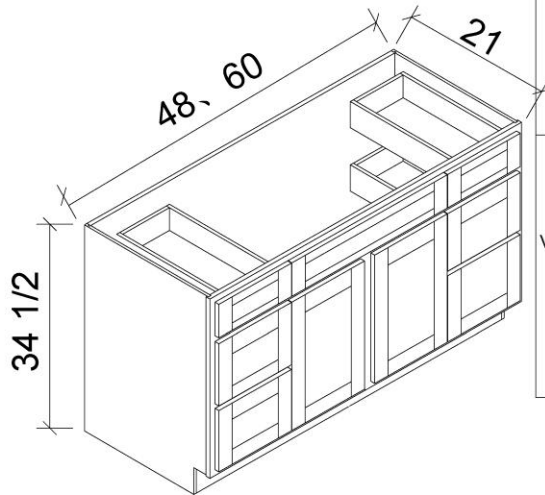
## E2I Product Specifications – Vanity Cabinet

Vanity Combo Base-Drawers Right



Model	Description	Width	Height	Depth
VSD36R	Cabinet Dimension	36	34½	21
	Door Dimension	20½	11¾	¾
	Top Drawer Front	35½	6¾	¾
	Bottom Drawer Front	11⅞	10½	¾

Vanity Combo Base



Model	Description	Width	Height	Depth
VSD48-6D	Cabinet Dimension	48	34½	21
	Door Dimension	11¾	21½	¾
	Top Drawer Front	11⅞	6¾	¾
	Top Long Drawer Front	23⅞	6¾	¾
	Bottom Drawer Front	11⅞	10½	¾
VSD60-6D	Cabinet Dimension	60	34½	21
	Door Dimension	11¾	21½	¾
	Top Drawer Front	17½	6¾	¾
	Top Long Drawer Front	23⅞	6¾	¾
	Bottom Drawer Front	17½	10½	¾

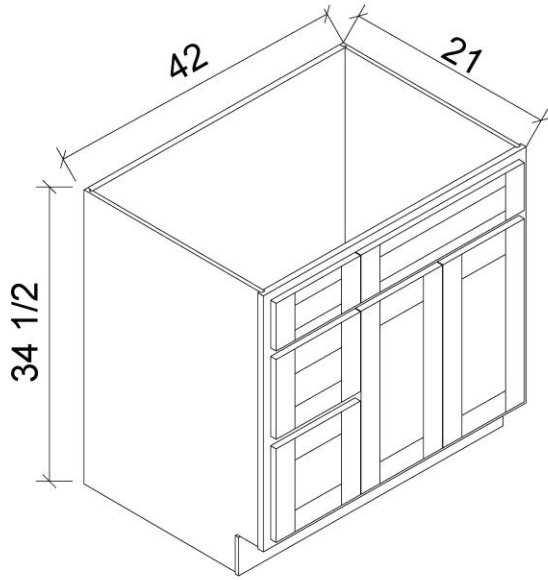
page 26

Note: Beyond the product(s) shown here, the E2I team is able to source additional options to fit the budget, spec, and scope of your project.



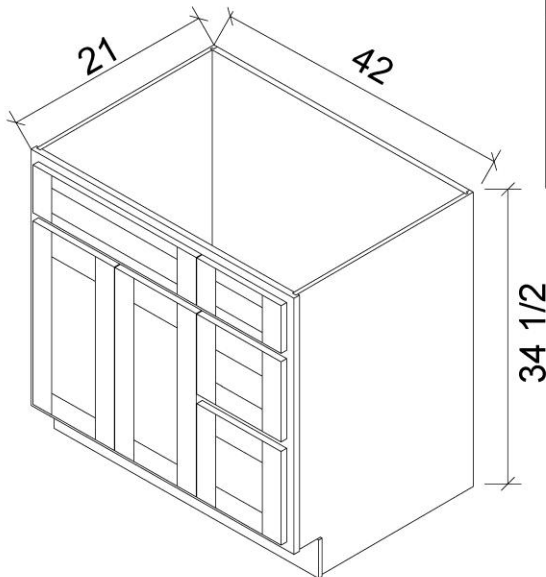
## E2I Product Specifications – Vanity Cabinet

Vanity Combo Base-Drawers Left



Model	Description	Width	Height	Depth
2VSD4L	Cabinet Dimension	42	34½	21
	Door Dimension	20½	14¾	¾
	Top Drawer Front	11⅞	6¾	¾
	Top Long Drawer Front	29½	6¾	¾
	Bottom Drawer Front	11⅞	10½	¾

Vanity Combo Base-Drawers Right



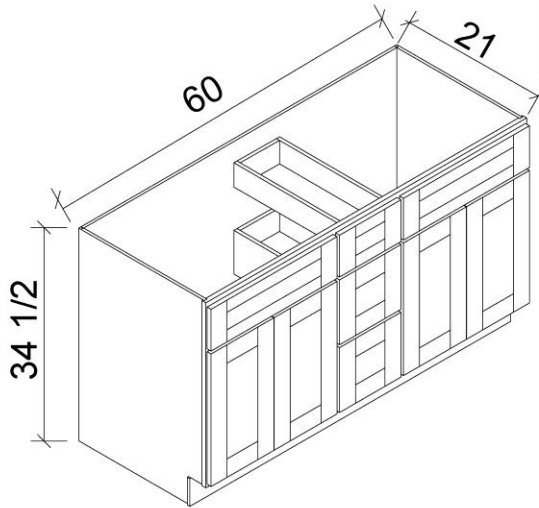
Model	Description	Width	Height	Depth
VSD42R	Cabinet Dimension	42	34½	21
	Door Dimension	20½	14¾	¾
	Top Drawer Front	11⅞	6¾	¾
	Top Long Drawer Front	29½	6¾	¾
	Bottom Drawer Front	11⅞	10½	¾

page 27

Note: Beyond the product(s) shown here, the E2I team is able to source additional options to fit the budget, spec, and scope of your project.

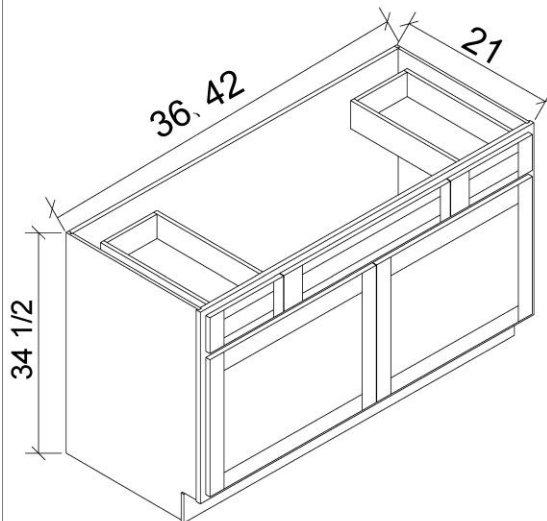
## E2I Product Specifications – Vanity Cabinet

Vanity Combo Base



Model	Description	Width	Height	Depth
VSD60-DD	Cabinet Dimension	60	34½	21
	Door Dimension	11¾	21½	¾
	Top Drawer Front	11⅞	6¾	¾
	Top Long Drawer Front	23⅞	6¾	¾
	Bottom Drawer Front	11⅞	10½	¾

Vanity Combo Base



Model	Description	Width	Height	Depth
VSDB36	Cabinet Dimension	36	34½	21
	Door Dimension	17⅞	21½	¾
	Top Drawer Front	8⅞	6¾	¾
	Top Long Drawer Front	17½	6¾	¾
VSDB42	Cabinet Dimension	42	34½	21
	Door Dimension	20¾	21½	¾
	Top Drawer Front	11⅞	6¾	¾
	Top Long Drawer Front	17½	6¾	¾

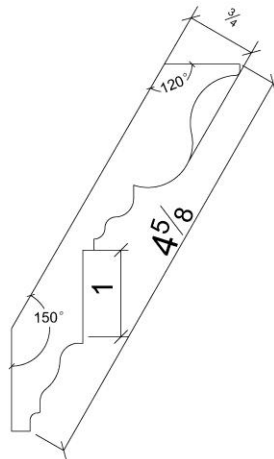
page 28

Note: Beyond the product(s) shown here, the E2I team is able to source additional options to fit the budget, spec, and scope of your project.

## E2I Product Specifications – Panels, Fillers & Moldings

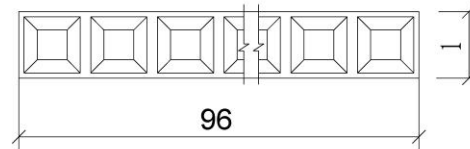
Crown Molding: CM 4 $\frac{5}{8}$  -DE

Model	Description	Width	Height	Depth
CM 4 $\frac{5}{8}$ -DE	Dimension	96	4 $\frac{5}{8}$	$\frac{3}{4}$



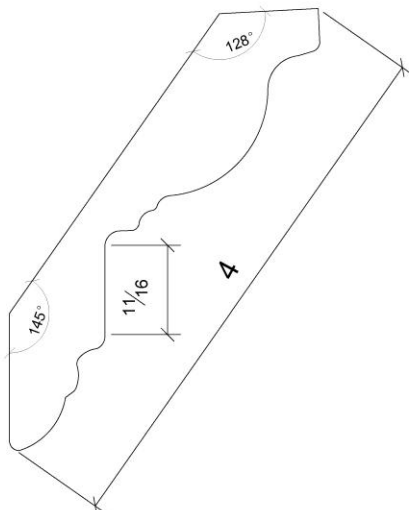
Crown Molding: DENTAL

Model	Description	Width	Height	Depth
DENTAL	Dimension	96	1	$\frac{3}{8}$



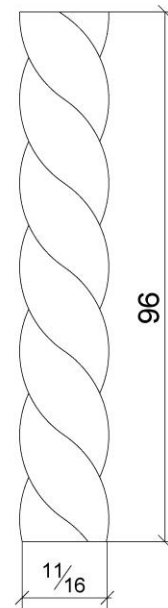
Crown Molding: CM4-RM

Model	Description	Width	Height	Depth
CM4-RM	Dimension	96	4	$\frac{3}{4}$



Crown Molding: RM

Model	Description	Width	Height	Depth
RM	Dimension	96	1 $\frac{1}{8}$	$\frac{5}{16}$



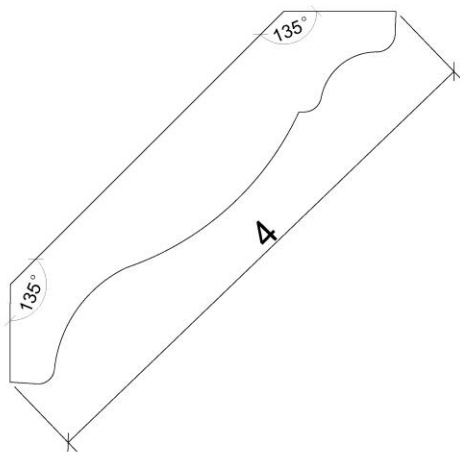
page 29

Note: Beyond the product(s) shown here, the E2I team is able to source additional options to fit the budget, spec, and scope of your project.

# E2I Product Specifications – Panels, Fillers & Moldings

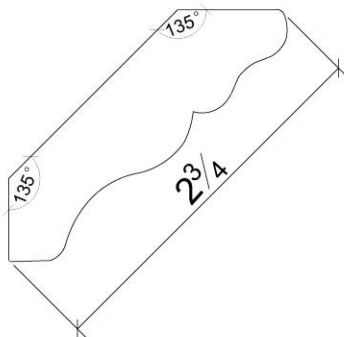
Crown Molding:CM4

Model	Description	Width	Height	Depth
CM 4	Dimension	96	4	$\frac{3}{4}$



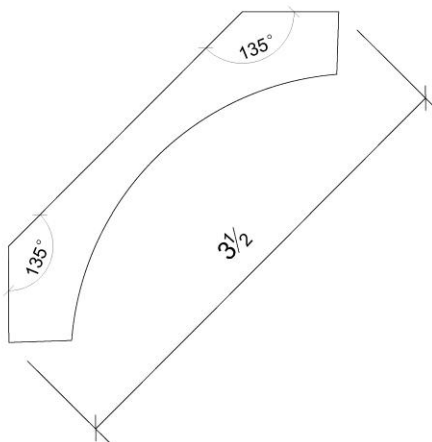
Crown Molding:CM-2 $\frac{3}{4}$

Model	Description	Width	Height	Depth
CM-2 $\frac{3}{4}$	Dimension	96	2 $\frac{3}{4}$	$\frac{3}{4}$



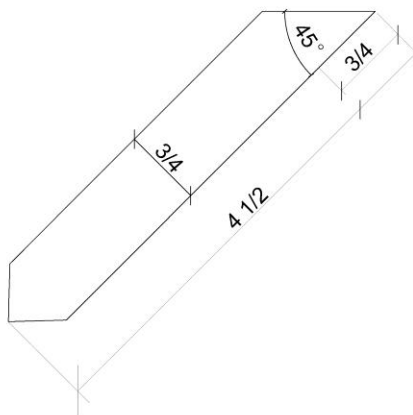
Crown Molding:COV-3.5

Model	Description	Width	Height	Depth
COV-3.5	Dimension	96	3 $\frac{1}{2}$	$\frac{7}{8}$



Molding:CM8-S

Model	Description	Width	Height	Depth
CM8-S	Dimension	96	4 $\frac{1}{2}$	$\frac{3}{4}$

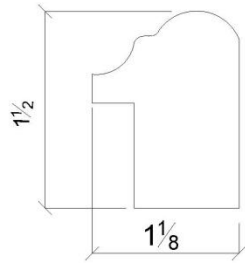


Note: Beyond the product(s) shown here, the E2I team is able to source additional options to fit the budget, spec, and scope of your project.

## E2I Product Specifications – Panels, Fillers & Moldings

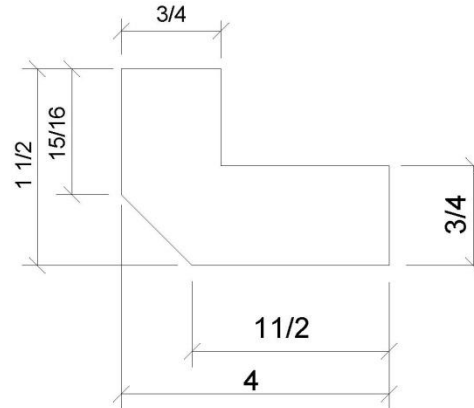
Light Rail Molding:LRM8

Model	Description	Width	Height	Depth
LRM8	Dimension	96	1½	1½



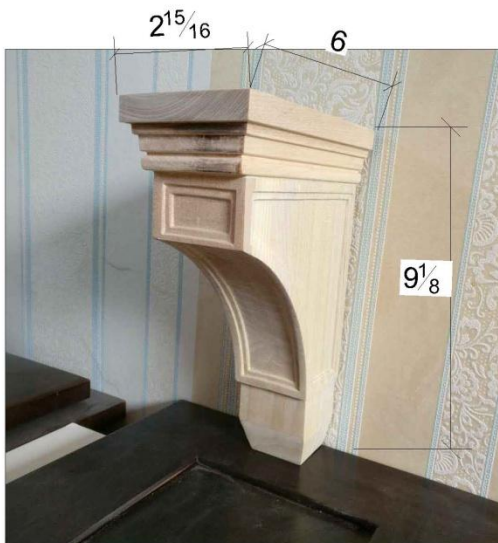
Light Rail Molding Shaker:LRM8-S

Model	Description	Width	Height	Depth
LRM8-S	Dimension	96	1½	1⅛



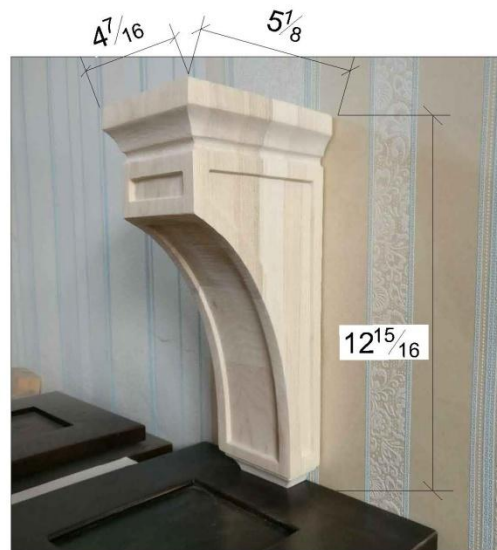
Corbel-Small

Model	Description	Width	Height	Depth
Corbel-Small	Dimension	2 <sup>15</sup> / <sub>16</sub>	9 <sup>1</sup> / <sub>8</sub>	6



Corbel-Big

Model	Description	Width	Height	Depth
Corbel-Big	Dimension	4 <sup>7</sup> / <sub>16</sub>	12 <sup>15</sup> / <sub>16</sub>	5 <sup>1</sup> / <sub>8</sub>

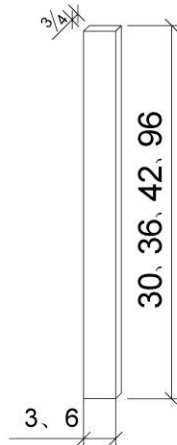


page 31

Note: Beyond the product(s) shown here, the E2I team is able to source additional options to fit the budget, spec, and scope of your project.

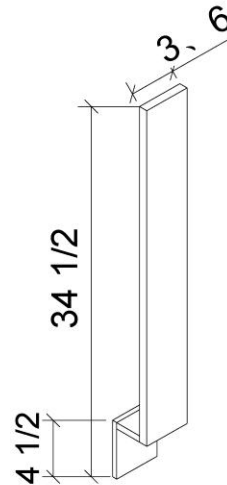
## E2I Product Specifications – Panels, Fillers & Moldings

### Fillers



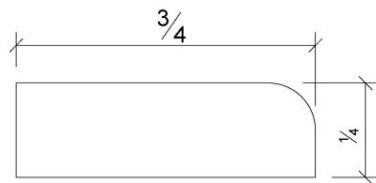
Model	Description	Width	Height	Depth
WF330	Dimension	3	30	$\frac{3}{4}$
WF336	Dimension	3	36	$\frac{3}{4}$
WF342	Dimension	3	42	$\frac{3}{4}$
WF630	Dimension	6	30	$\frac{3}{4}$
WF636	Dimension	6	36	$\frac{3}{4}$
WF642	Dimension	6	42	$\frac{3}{4}$
TF396	Dimension	3	96	$\frac{3}{4}$
TF696	Dimension	6	96	$\frac{3}{4}$

### Fillers



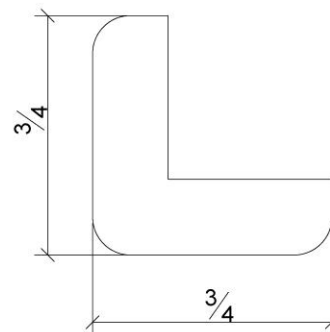
Model	Description	Width	Height	Depth
BF3	Dimension	3	$34\frac{1}{2}$	$3\frac{3}{4}$
BF6	Dimension	6	$34\frac{1}{2}$	$3\frac{3}{4}$

### Moldings:SM8



Model	Description	Width	Height	Depth
SM8	Dimension	96	$\frac{3}{4}$	$\frac{1}{4}$

### Moldings:OCM8

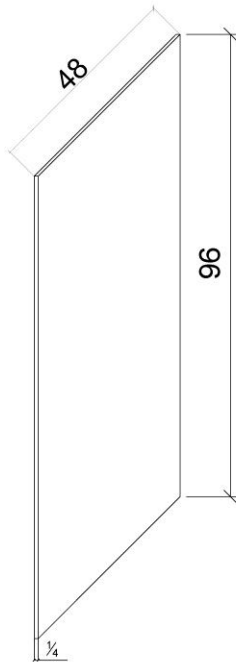


Model	Description	Width	Height	Depth
OCM8	Dimension	96	$\frac{3}{4}$	$\frac{3}{4}$

Note: Beyond the product(s) shown here, the E2I team is able to source additional options to fit the budget, spec, and scope of your project.

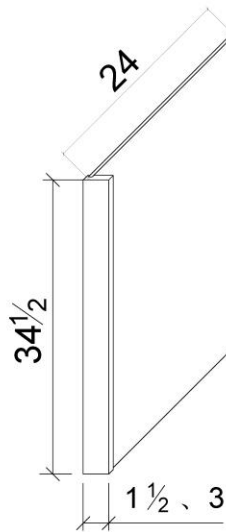
# E2I Product Specifications – Panels, Fillers & Moldings

Panels:PNL 1/4X4X8-Natural

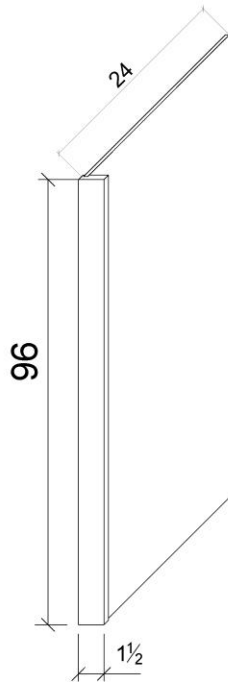


Panels:DWR1.5、DWR3

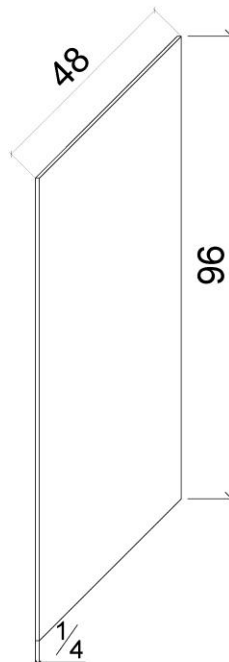
Model	Description	Width	Height	Depth
DWR1.5	Dimension	1½	34½	24
DWR3	Dimension	3	34½	24



Panels:REF96-1 ½



Panels:PNL 1/4X4X8 White Finish

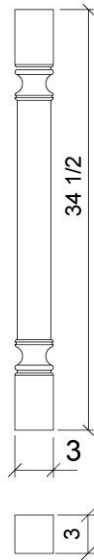


Note: Beyond the product(s) shown here, the E2I team is able to source additional options to fit the budget, spec, and scope of your project.



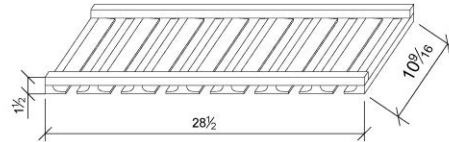
## E2I Product Specifications – Panels, Fillers & Moldings

Tall Post: TP3



Model	Description	Width	Height	Depth
TP3	Dimension	3	34 1/2	3

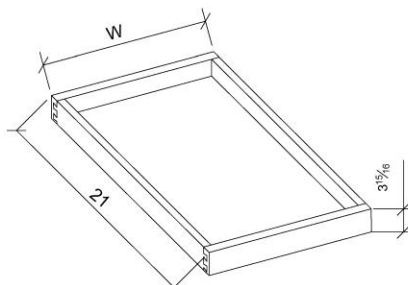
Stem Glass Holder



Model	Description	Width	Height	Depth
SGH30	Dimension	28 1/2	10 9/16	1 1/2

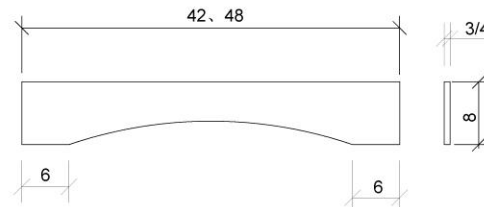
Roll Out Tray

Model	Description	Width	Height	Depth
RT12	Dimension	8 9/16	3 15/16	21
RT15	Dimension	11 9/16	3 15/16	21
RT18	Dimension	14 9/16	3 15/16	21
RT21	Dimension	17 9/16	3 15/16	21
RT24	Dimension	20 9/16	3 15/16	21
RT27	Dimension	23 9/16	3 15/16	21
RT30	Dimension	23 9/16	3 15/16	21
RT33	Dimension	29 9/16	3 15/16	21
RT36	Dimension	32 9/16	3 15/16	21



Valances

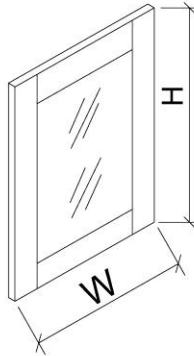
Model	Description	Width	Height	Depth
Val42	Dimension	42	8	3/4
Val48	Dimension	48	8	3/4



Note: Beyond the product(s) shown here, the E2I team is able to source additional options to fit the budget, spec, and scope of your project.

## E2I Product Specifications – Accessories

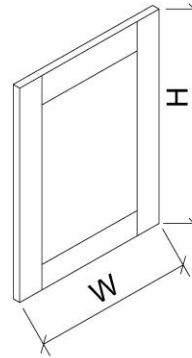
Glass Door



Model	Description	Width	Height	Depth
W1212GD	Dimension	11 $\frac{1}{16}$	11 $\frac{1}{16}$	$\frac{3}{4}$
W1512GD	Dimension	14 $\frac{9}{16}$	11 $\frac{1}{16}$	$\frac{3}{4}$
W1812GD	Dimension	17 $\frac{7}{16}$	11 $\frac{1}{16}$	$\frac{3}{4}$
W2112GD	Dimension	20 $\frac{5}{16}$	11 $\frac{1}{16}$	$\frac{3}{4}$
W2412GD	Dimension	11 $\frac{3}{4}$	11 $\frac{1}{16}$	$\frac{3}{4}$
W2712GD	Dimension	13 $\frac{1}{4}$	11 $\frac{1}{16}$	$\frac{3}{4}$
W3012GD	Dimension	14 $\frac{3}{4}$	11 $\frac{1}{16}$	$\frac{3}{4}$
W3312GD	Dimension	16 $\frac{1}{4}$	11 $\frac{1}{16}$	$\frac{3}{4}$
W3612GD	Dimension	17 $\frac{1}{16}$	11 $\frac{1}{16}$	$\frac{3}{4}$
W1230GD	Dimension	11 $\frac{1}{16}$	29 $\frac{5}{16}$	$\frac{3}{4}$
W1530GD	Dimension	14 $\frac{9}{16}$	29 $\frac{5}{16}$	$\frac{3}{4}$
W1830GD	Dimension	17 $\frac{7}{16}$	29 $\frac{5}{16}$	$\frac{3}{4}$
W2430GD	Dimension	23 $\frac{3}{16}$	29 $\frac{5}{16}$	$\frac{3}{4}$
W3030GD	Dimension	14 $\frac{4}{3}$	29 $\frac{5}{16}$	$\frac{3}{4}$
W3630GD	Dimension	17 $\frac{1}{16}$	29 $\frac{5}{16}$	$\frac{3}{4}$
W1236GD	Dimension	11 $\frac{1}{16}$	35 $\frac{5}{16}$	$\frac{3}{4}$
W1536GD	Dimension	14 $\frac{9}{16}$	35 $\frac{5}{16}$	$\frac{3}{4}$
W1836GD	Dimension	17 $\frac{7}{16}$	35 $\frac{5}{16}$	$\frac{3}{4}$
W2436GD	Dimension	23 $\frac{3}{16}$	35 $\frac{5}{16}$	$\frac{3}{4}$
W3036GD	Dimension	14 $\frac{3}{4}$	35 $\frac{5}{16}$	$\frac{3}{4}$
W3636GD	Dimension	17 $\frac{1}{16}$	35 $\frac{5}{16}$	$\frac{3}{4}$
W1242GD	Dimension	11 $\frac{1}{16}$	41 $\frac{1}{16}$	$\frac{3}{4}$
W1542GD	Dimension	14 $\frac{9}{16}$	41 $\frac{1}{16}$	$\frac{3}{4}$
W1842GD	Dimension	17 $\frac{7}{16}$	41 $\frac{1}{16}$	$\frac{3}{4}$
W2442GD	Dimension	23 $\frac{3}{16}$	41 $\frac{1}{16}$	$\frac{3}{4}$
W3042GD	Dimension	14 $\frac{3}{4}$	41 $\frac{1}{16}$	$\frac{3}{4}$
W3642GD	Dimension	17 $\frac{1}{16}$	41 $\frac{1}{16}$	$\frac{3}{4}$
WDC2430GD	Dimension	15 $\frac{1}{4}$	29 $\frac{5}{16}$	$\frac{3}{4}$
WDC2436GD	Dimension	15 $\frac{1}{4}$	35 $\frac{5}{16}$	$\frac{3}{4}$
WDC2442GD	Dimension	15 $\frac{1}{4}$	41 $\frac{1}{16}$	$\frac{3}{4}$
WDC2730GD	Dimension	15 $\frac{1}{4}$	29 $\frac{5}{16}$	$\frac{3}{4}$
WDC2736GD	Dimension	15 $\frac{1}{4}$	35 $\frac{5}{16}$	$\frac{3}{4}$
WDC2742GD	Dimension	15 $\frac{1}{4}$	41 $\frac{1}{16}$	$\frac{3}{4}$

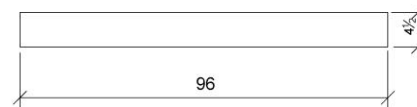
End Panel Door  
Sample Door

Model	Description	Width	Height	Depth
BEDP	Dimension	23 $\frac{1}{2}$	28 $\frac{4}{3}$	$\frac{3}{4}$
WEDP12	Dimension	11 $\frac{1}{2}$	11 $\frac{1}{16}$	$\frac{3}{4}$
WEDP30	Dimension	11 $\frac{1}{2}$	29 $\frac{5}{16}$	$\frac{3}{4}$
WEDP36	Dimension	11 $\frac{1}{2}$	35 $\frac{5}{16}$	$\frac{3}{4}$
WEDP42	Dimension	11 $\frac{1}{2}$	41 $\frac{1}{16}$	$\frac{3}{4}$
SD	Dimension	11	15	$\frac{3}{4}$



Toe Kick

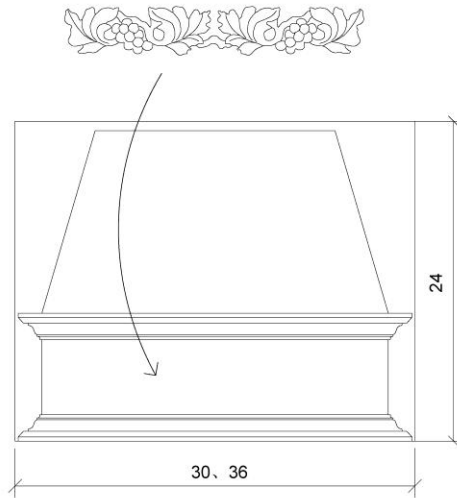
Model	Description	Width	Height	Depth
TK8	Dimension	96	4 $\frac{1}{2}$	$\frac{3}{16}$



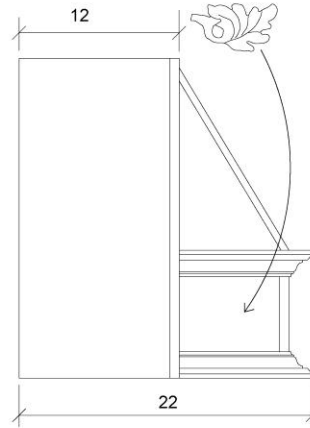
Note: Beyond the product(s) shown here, the E2I team is able to source additional options to fit the budget, spec, and scope of your project.

## E2I Product Specifications – Accessories

### Wood Hood

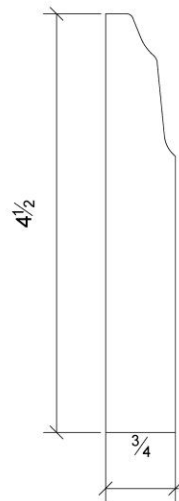


Model	Description	Width	Height	Depth
RHE3024	Dimension	30	24	22
RHE3624	Dimension	36	24	22



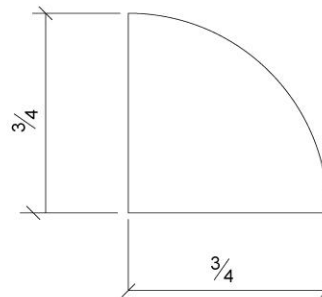
### Base Molding

Model	Description	Width	Height	Depth
Base Moulding	Dimension	96	4½	¾



### Molding:QR8

Model	Description	Width	Height	Depth
QR8	Dimension	96	¾	¾



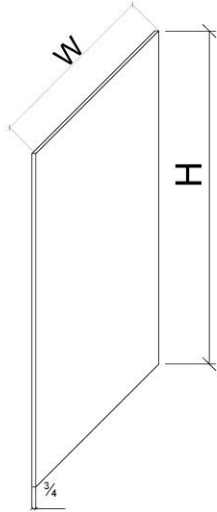
page 36

Note: Beyond the product(s) shown here, the E2I team is able to source additional options to fit the budget, spec, and scope of your project.

## E2I Product Specifications – Panels & Accessories

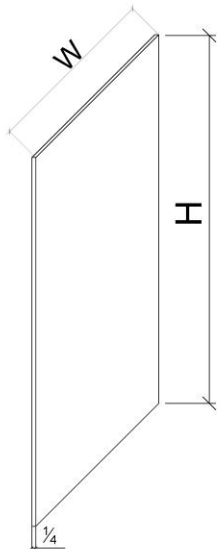
### Panels: White Finish

Model	Description	Width	Height	Depth
2496Panel	Dimension	24	96	$\frac{3}{4}$
4896Panel	Dimension	48	96	$\frac{3}{4}$
PN2496-3/4	Dimension	24	96	$\frac{3}{4}$
PN34.5X96-3/4	Dimension	$34\frac{1}{2}$	96	$\frac{3}{4}$



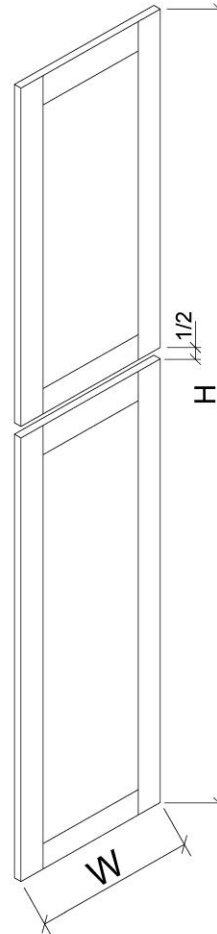
### Skin Panel

Model	Description	Width	Height	Depth
WSV42 42X11 $\frac{1}{4}$ X $\frac{1}{4}$	Dimension	11 $\frac{1}{4}$	42	$\frac{1}{4}$
BSV 34 $\frac{1}{2}$ X23 $\frac{3}{4}$ X $\frac{1}{4}$	Dimension	23 $\frac{3}{4}$	34 $\frac{1}{2}$	$\frac{1}{4}$



### Tall End Panel

Model	Description	Width	Height	Depth
TEDP2484	Dimension	23 $\frac{1}{2}$	78 $\frac{1}{16}$	$\frac{3}{4}$
TEDP2490	Dimension	23 $\frac{1}{2}$	84 $\frac{1}{16}$	$\frac{3}{4}$
TEDP2496	Dimension	23 $\frac{1}{2}$	90 $\frac{1}{16}$	$\frac{3}{4}$



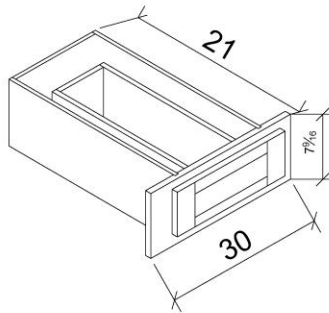
page 37

Note: Beyond the product(s) shown here, the E2I team is able to source additional options to fit the budget, spec, and scope of your project.

## E2I Product Specifications – Accessories

### Vanity Knee Drawer

Model	Description	Width	Height	Depth
DU3021	Cabinet Dimension	30	7 $\frac{7}{16}$	21
	Drawer Front	23 $\frac{3}{16}$	6 $\frac{3}{4}$	$\frac{3}{4}$



Note: Beyond the product(s) shown here, the E2I team is able to source additional options to fit the budget, spec, and scope of your project.